

DL Series

Accessories



Contents

Current Probes	2
Differential Probes	3
Passive Probes & FET Probe	4
Logic Probes and Accessories	5
Adapters, Front Panel Protective Covers	6
DL750, DL1600, DL7400 Series Accessories	7
DL750 High-Voltage Measurement	
Accessories, Cables	8
Carrying Cases, Probe Cases	9
Instrument Carts, Printer paper	10
Software	11

Current Probes For High Current and Wide Bandwidth Measurements

Yokogawa's 700937, 701930, 701931 and 701932 current probes make it easy to observe current waveforms on an oscilloscope. Depending on your signal's bandwidth and maximum current, you can choose the right current probe for your measurement.

701933 DC to 50MHz, 30A



Bandwidth: DC to 50MHz(-3dB)
 Maximum peak current value: 30Arms
 Amplitude accuracy
 (0 to 30Arms): $\pm 1.0\%$ of rdg $\pm 1\text{mV}$
 (to 50Apeak): $\pm 2.0\%$ of rdg (DC, 45 to 66Hz)
 Weight: Approx. 230 g

701932 DC to 100MHz, 30A



Bandwidth: DC to 100 MHz(-3dB)
 Maximum continuous input range: 30Arms
 Amplitude accuracy
 (0 to 30Arms): $\pm 1.0\%$ of rdg $\pm 1\text{mV}$
 (to 50Apeak): $\pm 2.0\%$ of rdg (DC, 45 to 66Hz)
 Weight: Approx. 240 g

701930 DC to 10MHz, 150A



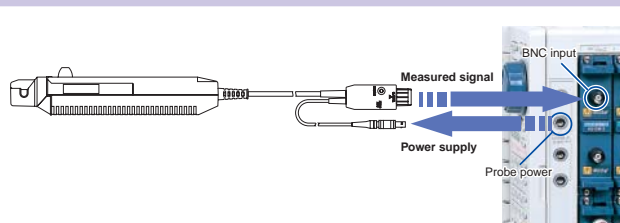
Bandwidth: DC to 10 MHz(-3dB)
 Maximum continuous input range: 150Arms
 Amplitude accuracy
 (0-150Arms): $\pm 1.0\%$ of rdg $\pm 1\text{mV}$
 (~300Apeak): $\pm 2.0\%$ of rdg (DC, 45 to 66Hz)
 Weight: Approx. 500g

701931 DC to 2MHz, 500A



Bandwidth: DC to 2 MHz(-3dB)
 Maximum continuous input range: 500Arms
 Amplitude accuracy
 (0 to 500Arms): $\pm 1.0\%$ of rdg $\pm 5\text{mV}$
 (to 700Apeak): $\pm 2.0\%$ of rdg (DC, 45 to 66Hz)
 Weight: Approx. 520g

- Bandwidth: DC to 2/10/50/100 MHz
- Max Current: Max 30/150/500 A
- Clamp Configuration Makes Current Measurements Easy
- No External Amplifier Required: Connects Directly to DL Series Instruments
- Powered by the DL's Probe Power Supply Connectors
- Current Values Can Be Read Directly on DL Series Instruments
- Includes Demagnetizing Switch and Zero Adjust Dial Functions



701934 Probe Power Supply

A power supply for current probes, FET probes, and differential probes. Supplies power for up to four probes, including large current probes.



Number of power supply connectors: 4
 Output voltage: $\pm 12\text{ V} \pm 0.5\text{ V}$
 Rated output current:
 +12 V: 2.5 A, -12 V: 2.5 A (the total value of four outputs)
 Rated supply voltage: AC100 to 240 V (50/60 Hz)
 External dimensions: Approx. 80 (W) * 119 (H) * 200 (D) mm
 Weight: Approx. 1.1 kg

■ See the bulletin 7019-30E for detailed specifications.

■ When using the DL to power the current probes, make sure that the total current consumption of the probes does not exceed the DL's probe power rating. See the following web site for details.

<http://www.yokogawa.com/tm/probe/>

Differential Probes For High-Voltage and High-Bandwidth Measurements

Yokogawa's differential probes let you make wide-bandwidth differential measurements. Just connect the output of the probe to the input of a single-ended digital oscilloscope. We provide you a variety of differential probes, which can be utilized for measuring the gate-to-source voltage of a switching power supply, read/write signals of a hard disk drive, high-speed logic signals, CAN bus signals, and more.

700924 Max. $\pm 1400\text{V}/100\text{MHz}$



Bandwidth: DC to 100MHz(-3dB)
 Input attenuation ratio:
 Switch between 1/100 and 1/1000
 Maximum allowed differential voltage:
 : $\pm 1400\text{V}(\text{DC}+\text{ACpeak})$ or $1000\text{Vrms}(1/1000)$
 Maximum common mode input voltage:
 : $\pm 1400\text{V}(\text{DC}+\text{ACpeak})$ or $1000\text{Vrms}(1/100, 1/1000)$

701921 Max. $\pm 700\text{V}/100\text{MHz}$



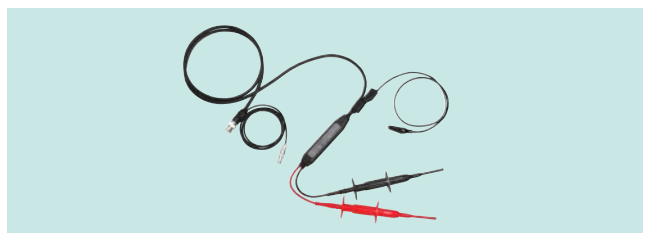
Bandwidth: DC to 100MHz(-3dB)
 Input attenuation ratio: Switch between 1/10 and 1/100
 Maximum allowed differential voltage: $\pm 700\text{V}(\text{DC}+\text{ACpeak}, 1/100)$
 Maximum common mode input voltage: $\pm 700\text{V}(\text{DC}+\text{ACpeak}) (1/10, 1/100)$

700925 Max. $\pm 500\text{V}/15\text{MHz}$



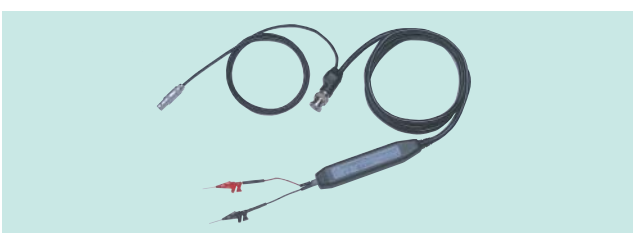
Bandwidth: DC to 15MHz(-3dB)
 Input attenuation ratio: Switch between 1/10, 1/100
 Maximum allowed differential voltage:
 : $\pm 500\text{V}(\text{DC}+\text{ACpeak})$ or $350\text{Vrms} (1/100)$
 Maximum common mode input voltage:
 : $\pm 500\text{V}(\text{DC}+\text{ACpeak})$ or $350\text{Vrms}(1/10, 1/100)$

701922 Max. $\pm 20\text{V}/200\text{MHz}$



Bandwidth: DC to 200MHz(-3dB)
 Input attenuation ratio: 1/10(fixed)
 Maximum allowed differential voltage: $\pm 20\text{V}(\text{DC}+\text{ACpeak})$
 Maximum common mode input voltage: $\pm 60\text{V}(\text{DC}+\text{ACpeak})$
 50 Ω output

701920 Max. $\pm 12\text{V}/500\text{MHz}$



Bandwidth: DC to 500MHz(-3dB)
 Input attenuation ratio: 1/10(fixed)
 Input impedance: $100\text{K}\Omega / 2.5\text{pF}$
 Maximum allowed differential voltage: $\pm 12\text{V}(\text{DC}+\text{ACpeak})$
 Maximum common mode input voltage: $\pm 30\text{V}(\text{DC}+\text{ACpeak})$
 50 Ω output

B9852MJ Power cable



The B9852MJ cable supplies power to the 700924, 700925 and 701921 differential probes* from the DL probe power connectors. (The probe power option is required on the DL unit.)

700976

50 Ω terminator



Used to connect an oscilloscope having a 1M-ohm input to a probe with a 50-ohm output. It is required when using the 701920 and 701922 probes with the DL1600 series.

* Cable only works with newer 700924, 700925 and 701921 probes that indicate "6VDC or 9VDC" at the probe input power connector.

Differential Probe Selection Guide

Model	Frequency bandwidth	Attenuation Ratio	Maximum allowed differential voltage	Maximum input voltage	Power supplies	Application
700924	DC to 100MHz(-3dB)	1/100, 1/1000	$\pm 1400\text{V}(\text{DC}+\text{ACpeak})$	$\pm 1400\text{V}(\text{DC}+\text{ACpeak})$	AA batteries or B9852MJ Power cable* *: sold separately	For High voltage measurement •High voltage($\pm 1400\text{V}$) can be measured safely •Useful for evaluating high-frequency inverter circuits (e.g., IGBT) •High common mode input voltage
701921	DC to 100MHz(-3dB)	1/10, 1/100	$\pm 700\text{V}(\text{DC}+\text{ACpeak})$	$\pm 1000\text{V}(\text{DC}+\text{ACpeak})$	AA batteries or B9852MJ Power cable* *: standard accessory	For High and medium voltage measurement •Useful for high and medium voltage differential measurements •1/10, 1/100 (switchable)
700925	DC to 15MHz(-3dB)	1/10, 1/100	$\pm 500\text{V}(\text{DC}+\text{ACpeak})$	$\pm 1000\text{V}(\text{DC}+\text{ACpeak})$	AA batteries or B9852MJ Power cable* *: sold separately	For medium voltage measurement
701922	DC to 200MHz(-3dB)	1/10 (fixed)	$\pm 20\text{V}(\text{DC}+\text{ACpeak})$	$\pm 60\text{V}(\text{DC}+\text{ACpeak})$	Power supply cable	For medium speed signal measurement •For CAN bus signal measurement •Sensor signal measurement for automobile development
701920	DC to 500MHz(-3dB)	1/10 (fixed)	$\pm 12\text{V}(\text{DC}+\text{ACpeak})$	$\pm 40\text{V}(\text{DC}+\text{ACpeak})$	Power supply cable	For high speed signal measurement •For high speed differential measurement such as LVDS •For measuring signals floating from ground in a high-speed digital circuit •Input capacity : 2.5pF

■The max. current consumption of all the above differential probes is $\pm 125\text{mA}$. Make sure that the total current consumption of the probes does not exceed the DL's probe power rating.
 ■See the following web site for details. <http://www.yokogawa.com/tm/probe/>

Passive Probes & FET Probe

Yokogawa offers a variety of passive probes including: probes designed for probing small areas (PCBs, ICs, etc.), and for measuring high voltage levels. Yokogawa also offers a FET probe which has minimal input capacitance for making accurate, measurements on fast signals.

700960

200MHz Passive Probe



For the DL1600 series
1.5m long

700988

400MHz Passive Probe



For the DL1700E,7400 series
1.5m long
Standard accessories include:
Ground lead, Pinchers tip, IC test tip, Ground attachment, Marker tip

701940

10:1 Passive Probe for DL750



For the DL750 701255 module
1.5m long
Standard accessories include:
Ground lead, Pinchers tip, IC test tip, Ground attachment, Marker tip

700929

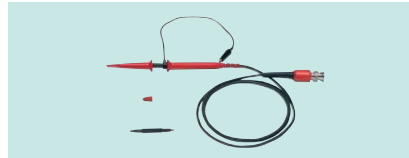
10:1 probe (Safety probe - for use with isolated input modules)



For the DL750 isolation modules
1.5m long

700978

High voltage probe



Attenuation ratio: 1/100(Fixed)
1.2m long
Standard accessories include:
Probe cap, Pinchers tip, Adjustment Driver, Ground lead

701941

Miniature passive probe



For DL1700E,7400 series
1.2m long
Standard accessories: Basic Accessories set B9852HF-see below.

Combination

700939

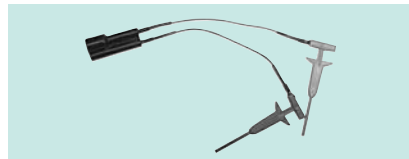
FET probe



Bandwidth: DC to 900MHz
1.5m long
50 Ω output

B9852CR

Mini clip converter



A clip set designed for the 700988, 700960 and 701940 probes.

B9852HF

Basic accessories set for the 701941 probe



11 accessories have been included in this set (See below *1).

Passive Probe Selection Guide

Model	Frequency Bandwidth	Attenuation Ratio	Maximum Input Voltage	Input Resistance/Capacitance ⁽²⁾	Compensation Range ⁽²⁾	Cable Length
700960	DC to 200MHz(- 3dB, 1/10)	1/1 or 1/10	600V(DC+ACpeak)	10MΩ/14pF(1/10)	14- 30pF	1.5m
700988	DC to 400MHz(- 3dB, 1/10)	1/1 or 1/10	600V(DC+ACpeak)	10MΩ/14pF(1/10)	15- 25pF	1.5m
701940	DC to 10MHz(- 3dB, 1/10)	1/1 or 1/10	600V(DC+ACpeak, nonisolated input)	10MΩ/22pF(1/10)	17- 46pF	1.5m
700929	DC to 100MHz(- 3dB)	1/10 (fixed)	1000V(DC+ACpeak, probe itself)	10MΩ/18pF	20- 45pF	1.5m
700978	DC to 100MHz(- 3dB)	1/100 (fixed)	4000V(DC+ACpeak)	50MΩ/4pF	10- 30pF	1.2m
701941	DC to 500MHz(- 3dB)	1/10 (fixed)	400Vrms	10MΩ/10pF	10- 25pF	1.2m
700939	DC to 900MHz(- 3dB)	1/10 (fixed)	10V(DC+ACpeak)	Approx. 2.5MΩ/Approx. 1.8pF	—	1.5m

*1: The B9852HF contains the following eleven(11) kinds of accessories.

(Insulation cap, IC cap, BNC adapter, Rigid tip, Spring tip (Ø: 0.80 mm), Spring tip (Ø: 0.38 mm), Ground spring, Adjustment tool, Pincher tip, Standard ground lead, Color coding rings)

*2: Input Capacitance: Capacitance at the tip of the probe

Compensation Range: Compensation Range for the input capacitance of the oscilloscope

See the following web site for details of these passive probes. <http://www.yokogawa.com/tm/probe/>

Logic Probes and Accessories

The DL7400 series lets you measure analog (4CH or 8CH) and logic(16-bit) signals simultaneously in one unit. The DL750 lets you capture up to 16 analog channels and 16-bit logic signals simultaneously. The following logic probes are used with these instruments.

701980

Logic Probe for DL7400



Maximum toggle frequency: 100MHz
Input impedance (typical value): 1M Ω /10 pF

701981

Logic Probe for DL7400



Maximum toggle frequency: 250MHz
Input impedance (typical value): 10k Ω /9pF

700986

Logic probe for the DL750 - non-isolated inputs



Two Measurement leads(B9879PX and B9879KX) included.

700987

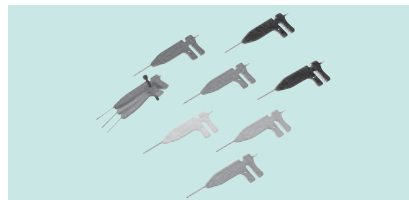
Logic Probe for the DL750 - isolated inputs



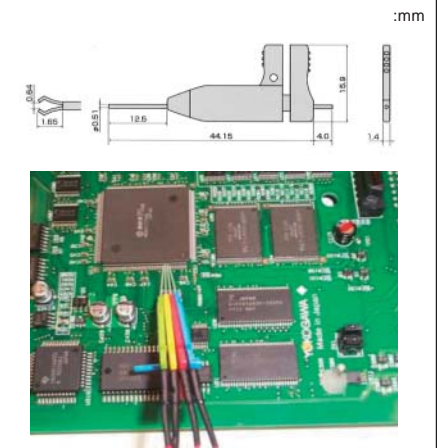
Use with measurement lead 758917 and 758922, 758929 or 701954 adapter leads (below). 701954 is shown on page 8.

B9852ES

IC Clip



Attached to the tips of logic probe (701980 or 701981) or mini-clips (B9852CR), the IC clips can be used to clip contiguous 0.5-mm pitch terminals. A total of 10 clips are included.



Combination

Combination

758917

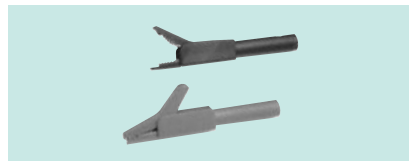
Measurement lead set



A set of 0.8m long red and black test leads, used in combination with a pair of optional 758922 or 758929 alligator-clip adapters.

758922

Small Alligator-clip Adapter



Rated at 300 V. Attaches to the 758917 test leads. Sold in pairs.

758929

Large Alligator-clip Adapter



Rated at 300 V. Attaches to the 758917 test leads. Sold in pairs.

Logic Probe Selection Guide

Model	Inputs	Nondestructive Input Voltage Range	Input Impedance	Input Voltage Range	Threshold Level	External Dimensions
701980	8	$\pm 10V$	1M Ω /10pF	+/-40V (DC +AC peak)	$\pm 10 V$ at 0.1 V resolution	85.7mm * 64.2mm * 20mm
701981	8	$\pm 10V$	10k Ω /9pF	+/-40V (DC +AC peak)	$\pm 10 V$ at 0.1 V resolution	85.7mm * 64.2mm * 20mm
700986	8	$\pm 42V$ (DC +AC peak)	Approx. 100k Ω	+/-42V (DC +AC peak)	1.4V	150mm * 60mm * 20mm
700987	8	DC input: H/L detection for 10 V DC to 250 V DC AC input: H/L detection (50/60 Hz) for 80 V AC to 250V AC	Approx. 100k Ω	250Vrms(CAT I , CAT II)	DC input 6 V DC $\pm 50\%$ AC input 50 V AC $\pm 50\%$	195mm * 117.3mm * 45mm

■ See the following web site for details.
<http://www.yokogawa.com/tm/probe/>

Adapters

366921

Conversion Adapter



BNC-Banana-jack (female) adapter. Use for circuits having voltage levels no greater than 42 V.

366922

Conversion Adapter



Banana-plug (male)-BNC adapter. Use for circuits having voltage levels no greater than 42 V.

366923

T-Adapter



T-adapter for BNC connectors. Use for circuits having voltage levels no greater than 42 V.

751512

Conversion Adapter



Safety-terminal-binding-post adapter. Use for circuits having voltage levels no greater than 42 V.

700976

50 Ω terminator



Used to connect an oscilloscope having a 1M-ohm input to a probe with a 50-ohm output. Frequency range: DC-500 MHz. Allowable power: 0.5 W.

366928

Conversion Adapter



A BNC (jack)-RCA (plug) adapter. Use for circuits having voltage levels no greater than 42 V.

758924

BNC Adapter



An adapter for fitting a 4mm wide banana plug to a BNC connector (male).

Front Panel Protective Covers

B9989FA

For DL1700E/1600 Series



A transparent cover to protect the front panel.

B8023EA

For DL750



A transparent cover to protect the front panel.

B8051DP

For DL7400 Series



A transparent cover to protect the front panel.

DL750 Accessories

701955·701956 NDIS Bridge Heads



NDIS cable(5m) included
Bridge resistance: 120 Ω (701955)
350 Ω (701956)

701957·701958 D-sub Bridge Heads



D-sub cable(5m) included
Supports Shunt-Cal
Bridge resistance: 120 Ω (701957)
350 Ω (701958)

700940 NDIS Connector Cable



A 1.5m long connector-to-connector adapter cable complying with NDIS-MIL C26482. Used to connect a MIL-standard cable to the strain module

A1002JC NDIS Connector



An NDIS connector for direct connection to a strain module.

701951 Earphone microphone



For recording and playing voice memos

701952 Speaker cable



For playing voice memos

701970 DC power cord



For the DC power supply model (/DC).
Cigarette lighter plug type
1.8m long

701971 DC power cord



For the DC power supply model (/DC).
Alligator clip type
1.8m long

DL1600 Series Accessories

701680 Battery Box (only works with - DC model)



Powers instrument for approx. 2 hours
Charging time: approx. 4.5 hours
Max. Power consumption: 200VA

B8050WP Battery box connection cable



For connection between DL1640 Series and 701680.
Comes standard with the 701680 battery box.

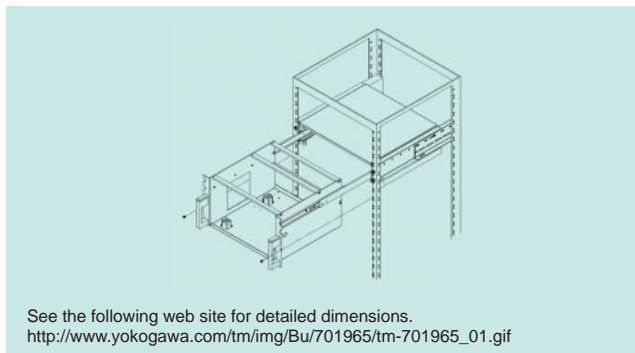
A1105JC DC power supply connector



For the DC power supply model (-DC).

DL7400 Series Accessories

701965 Rack mount kit (for EIA rack)



701935 Deskew signal source



For use with the Power Supply Analysis option (/G4)
Output voltage: Approx. 0 to 5 V
Output current: Approx. -100 to 0 mA

DL750 High-Voltage Measurement Accessories

These accessories enable safe high-voltage measurements when used together with DL750 isolated input modules. [Note: read the User's Manual carefully before making high-voltage measurements]

700929

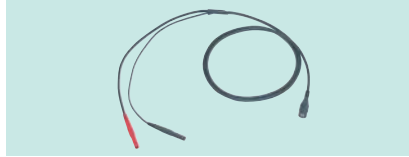
Isolation Probe



Use with DL750 isolation modules
For High-voltage measurements
1.5m long

701901

1:1 BNC safety adapter lead



1000Vrms-CAT II, 1.8m long
Safety BNC(male) to safety banana(female) use in combination with 701959, 701954, 758921, 758922 or 758929

701902·701903

Safety BNC cable



701902:
1000Vrms-CAT II (BNC-BNC), 1m
701903:
1000Vrms-CAT II (BNC-BNC), 2m

Small-sized

Large-sized

Combination

For screw terminal

701959

Safety Mini clip(Hook Type)



Set contains one black and one red clip.
1000Vrms-CAT II
It can be connected with 701901.

701954

Alligator clip(Dolphin type)



Set contains one black and one red clip.
1000Vrms-CAT II

758921

Fork terminal adapter



Adapters for fitting a 4mm banana plug to a fork terminal. Set contains one black and one red clip.
1000Vrms-CAT II

Cables

366924·366925

BNC cable



A 1m long (366924) and 2m long (366925) BNC-BNC cables.
Use only for circuits having voltage levels no greater than 42 V.

366926

BNC cable



A 1m long BNC-alligator clip cable.
Use only for circuits having voltage levels no greater than 42 V.

366973

Go/No-Go Cable



Do not use this cable for purposes other than DL750/1600/1700/7400 GO/NO-GO judgement.
Used to connect an external device.

Color	Pin No.	Signal Name	Logic
Yellow	2	START IN	Negative
White	3	GO OUT	Negative
Green	4	NOGO OUT	Negative
Blue	5	GND	

366961

Measurement lead



A subassembly of 1.2m long test leads with alligator-clip adapters.
Use only for circuits having voltage levels no greater than 42 V.

Carrying Cases, Probe Cases

701964

Soft Carrying Case for DL1600/DL1700E series



Three pockets are provided for storing accessories and the user's manual.
Can store the DC power supply model and the Battery box

700914

Soft Carrying Case for DL1700E series.



Soft type carrying case.

701950

Hard Carrying Case for DL1600/DL1700E series



Hard type carrying case.

701963

Soft Carrying Case for DL750



Three pockets are provided for storing accessories and the user's manual.

B9918EZ

Soft probe case for DL1600,1700E series.



For storing accessories (probes, etc).
It can be attached on the side of the DL1600 and 1700E series.

B9946EB

Soft Case for the DL750



For storing accessories (probes, etc).
It can be attached to the DL750's front panel protective cover.

B9969ET

Soft case for the DL7400 series.



For storing accessories (probes, etc).

Instrument Carts

We offer compact, deluxe and all-purpose instrument cars to meet your needs.

701960



Compact Instrument Cart
500 mm (W) × 560 mm (D) × 705 mm (H)
/A option: keyboard, mouse table
/B option: comes with a 3-prong power strip

Specifications

Upper shelf angle:
Horizontal or approximately 18°
Outer (maximum) dimensions:
500 mm (W) × 560 mm (D) × 705 mm (H)
Upper shelf dimensions:
450 mm (W) × 450 mm (D) × 25 mm (H)
Middle/lower shelf dimensions:
450 mm (W) × 450 mm (D) × 25 mm (H)
Space between middle and upper shelves: 300 mm
Space between middle and lower shelves: 240 mm
(without accessory tray)
Maximum load (per shelf): 20 kg
Cart weight: 21 kg



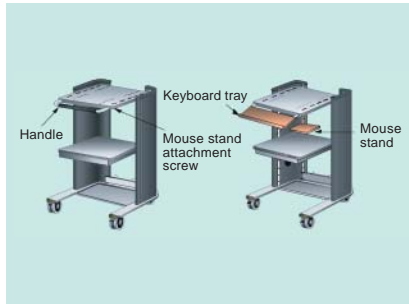
701961



Deluxe Instrument Cart
570 mm (W) × 580 mm (D) × 839 mm (H)
/A option: keyboard, mouse table
/B option: comes with a 3-prong power strip

Specifications

Shelf position:
Adjustable to any position using screw holes
Outer (maximum) dimensions:
570mm (W) × 580 mm (D) × 839mm (H)
Upper shelf dimensions:
450mm (W) × 450mm (D) × 35mm (H)
Lower shelf dimensions:
450mm (W) × 450mm (D) × 35mm (H)
Space between upper and lower shelves:
Depends on position of shelves
Maximum load (per shelf): 50 kg
Cart weight: 25 kg



701962



All-Purpose Instrument Cart
467 mm (W) × 693 mm (D) × 713 mm (H)

Specifications

Outer (maximum) dimensions:
467 mm (W) × 693 mm (D) × 713 mm (H)
Upper/lower shelf dimensions:
457 mm (W) × 683 mm (D)
Drawer:
610 mm (W) × 380 mm (D)
Slide-out table:
380 mm (W) × 440 mm (D)
Casters:
100 mm diameter wheels (front casters with stoppers)
Maximum load (per shelf): 50 kg
Cart weight: 23.5 kg

Printer Paper

B9850NX

DL Printer Paper (Except for DL750)



For the DL1600, DL1700E, DL7400 series
Paper width: 112mm
Paper length: 30m
Order Q'ty: 5 (1set)

B9988AE

Printer paper for the DL750

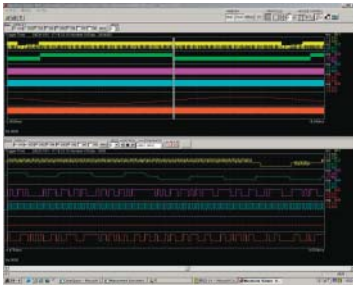


For the DL750
Paper width: 112mm
Paper length: 10m
Order Q'ty: 10 (1set)

Software

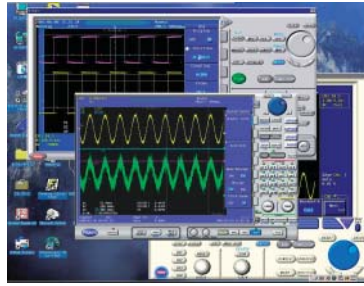
700919

Waveform Viewer for DL series



Waveform Viewer lets you view waveforms on your PC, just as you view them on the DL Series instrument.

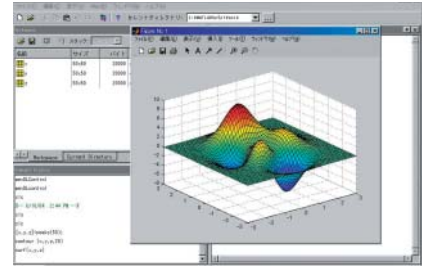
Wirepuller (free)



Wirepuller displays an image of the front panel DL Series on your PC for monitoring waveform signals. You control the DL Series by simply using your PC's mouse and keyboard to perform actions on the displayed front panel.

701991

MATLAB tool kit



The MATLAB tool kit for DL series is a plug-in for MATALAB software. The toolkit can be used to control supported DL series instruments using MATLAB or to acquire data from the DL series for use in MATLAB via a communication interface (GP-IB, USB, Ethernet).

Visit the following web sites for details about this software:

1. 700919 Waveform Viewer for DL series
<http://www.yokogawa.com/tm/700919/>
2. Wirepuller
<http://www.yokogawa.com/tm/wirepuller/>
3. MATLAB tool kit
<http://www.yokogawa.com/tm/701991/>

Model Numbers and Suffix Codes

■ Current Probes

Product	Model Name	Description	Order Q'ty
Current Probe	701933	DC to 50MHz	1
Current Probe	701930	DC to 10 MHz	1
Current Probe	701931	DC to 2 MHz	1
Current Probe	701932	DC to 100 MHz	1
Power supply	701934	Number of connectors : 4	1

■ Differential Probes

Product	Model Name	Description	Order Q'ty
Differential Probe	700924	Max. ±1400V/ 100MHz	1
Differential Probe	700925	Max. ±500V/ 15MHz	1
Differential Probe	701920	Max. ±12V/ 500MHz	1
Differential Probe	701921	Max. ±700V/ 100MHz	1
Differential Probe	701922	Max. ±20V/ 200MHz	1
Power cable	B9852MJ	Supplies power to the DL unit	1

■ Passive Probes, FET Probe

Product	Model Name	Description	Order Q'ty
Passive Probe	700960	200MHz bandwidth, 600V	1
Passive Probe	700988	500MHz bandwidth, 600V	1
Passive Probe	701940	10MHz bandwidth, 600V	1
10:1 probe	700929	100MHz bandwidth isolation probe	1
High voltage probe	700978	100MHz bandwidth, 4000V	1
Miniature passive probe	701941	500MHz bandwidth, 400Vrms	1
FET probe	700939	900MHz bandwidth, 10V	1
Basic accessories set for the 701941 probe	B9852HF	11 accessories have been included	1
Mini clip converter	B9852CR	for 700988/700960/701940 probes	1

■ Logic Probes

Product	Model Name	Description	Order Q'ty
Logic Probe	701980	Maximum toggle frequency : 100MHz	1
Logic Probe	701981	Maximum toggle frequency : 250MHz	1
Logic Probe	700986	For DL750 non-isolated input	1
Logic Probe	700987	For DL750 isolated inputs	1
IC Clip	B9852ES	For contiguous 0.5-mm pitch terminals	1
Measurement lead set	758917	For 700987 Isolated logic probe	1
Small Alligator-clip Adapter	758922	300Vrms-CAT II	1
Large Alligator-clip Adapter	758929	1000Vrms CAT II	1

■ Adapters

Product	Model Name	Description	Order Q'ty
Conversion Adapter	366921	BNC-Banana-jack (female) adapter	1
Conversion Adapter	366922	Banana-plug (male)-BNC adapter	1
T-Adapter	366923	T-adapter for BNC connectors	1
Conversion Adapter	751512	Safety terminal-binding post adapter	1
50 Ω terminator	700976	Feed-through type	1
Conversion Adapter	366928	A BNC (jack)-RCA (plug) adapter	1
BNC Adapter	758924	BNC-banana jack(female) adapter	1

■ Front Panel Protective Covers

Product	Model Name	Description	Order Q'ty
Front Panel Protective Cover	B9989FA	A transparent cover for the DL1700E/1600	1
Front Panel Protective Cover	B8023EA	A transparent cover for the DL750	1
Front Panel Protective Cover	B8051DP	A transparent cover for the DL7400	1

DL750 Accessories

Product	Model Name	Description	Order Q'ty
Bridge Head	701955	NDIS cable(5m) included, 120Ω	1
Bridge Head	701956	NDIS cable(5m) included, 350Ω	1
Bridge Head	701957	D-sub cable(5m) included, 120Ω	1
Bridge Head	701958	D-sub cable(5m) included, 350Ω	1
NDIS Connector Cable	700940	NDIS-MIL conversion, 1.5m long	1
NDIS Connector	A1002JC	For the Strain module	1
Earphone microphone	701951	For recording and playing voice memos	1
Speaker cable	701952	For playing voice memos	1
DC power cord	701970	Cigarette lighter plug type	1
DC power cord	701971	Alligator clip type	1

DL1600 Series Accessories

Product	Model Name	Description	Order Q'ty
Battery Box	701680	For DL1600 series	1
Battery box connection cable	B8050WP	For connection between DL1640 Series and 701680	1
DC power supply connector	A1105JC	For the DL1640 Series DC power supply model (-DC).	1

DL7400 Series Accessories

Product	Model Name	Description	Order Q'ty
Rack mount kit	701965	for EIA rack	1
Deskew signal source	701935	For Power Supply Analysis option	1

DL750 High-Voltage Measurement Accessories

Product	Model Name	Description	Order Q'ty
Isolation Probe	700929	For DL750 isolation module	1
1:1 BNC safety adapter lead	701901	1000Vrms-CAT II, A1.8m long	1
Safety Mini clip(Hook Type)	701959	A set of brack and red clip, 1000Vrms-CAT II	1
Alligator clip(Dolphin type)	701954	A set of brack and red clip, 1000Vrms-CAT II	1
Fork terminal adapter	758921	A set of brack and red clip, 1000Vrms-CAT II	1
Safety BNC cable	701902	1000Vrms, 1m long	1
Safety BNC cable	701903	1000Vrms, 2m long	1

Cables

Product	Model Name	Description	Order Q'ty
BNC cable	366924	1m long	1
BNC cable	366925	2m long	1
BNC cable	366926	A 1m long BNC-alligator clip cable	1
GO/NO-GO Cable	366973	For DL750/1600/1700/7400 GO/NO-GO judgement.	1
Measurement lead	366961	A subassembly of 1.2m long test leads with alligator-clip adapters	1

Carrying Cases, Probe Cases

Product	Model Name	Description	Order Q'ty
Soft Carrying Case	701964	For the DL1600/DL1700E series	1
Soft Carrying Case	700914	For the DL1700E series	1
Hard Carrying Case	701950	For the DL1600/DL1700E series	1
Soft Carrying Case	701963	For the DL750	1
Soft Case	B9918EZ	For the DL1600,1700E series	1
Soft Case	B9946EB	For the DL750	1
Soft Case	B9969ET	For the DL7400 series	1

Instrument Carts

Product	Model Name	Description	Order Q'ty
Instrument Cart	701960	Compact Instrument Cart	1
	/A	keyboard, mouse table	
	/B	3-prong power strip	
Instrument Cart	701961	Deluxe Instrument Cart	1
	/A	keyboard, mouse table	
	/B	3-prong power strip	
Instrument Cart	701962	All-Purpose Instrument Cart	1

Printer Paper

Product	Model Name	Description	Order Q'ty
Printer paper	B9850NX	For the DL1600, DL1700E, DL7400	5(1set)
Printer paper	B9988AE	For the DL750	10(1set)

Software

Product	Model Name	Description	Order Q'ty
Waveform Viewer for DL series	700919	For the DL1600, DL1700E, DL7400 series	1
Wirepuller	-	Free Software	-
MATLAB tool kit	701991	plug in software for the MATLAB	1

* Microsoft, Windows are trademarks or registered trademarks of Microsoft Corporation in the US and other countries.
* MATLAB is a registered trademark of the Math Works, Inc in the US.

YOKOGAWA

YOKOGAWA CORPORATION OF AMERICA

20420 Century Blvd. Germantown, Maryland 20874, U.S.A.

Phone: (1)-301-916-0409, Fax: (1)-301-916-1498

YOKOGAWA EUROPE B.V.

Databankweg 20, 3821 AL, Amersfoort, THE NETHERLANDS

Phone: (31)-33-4641858, Fax: (31)-33-4641859

YOKOGAWA ENGINEERING ASIA PTE. LTD.

5 Bedok South Road, Singapore 469270

Phone: (65)-62419933, Fax: (65)-62412606

YOKOGAWA MEASURING INSTRUMENTS KOREA CORP.

Phone: (82)-2-551-0660, Fax: (82)-2-551-0665

YOKOGAWA SHANGHAI TRADING CO., LTD.

Phone: (86)-21-6880-8107, Fax: (86)-21-6880-4987

YOKOGAWA ELECTRIC CORPORATION

Communication & Measurement Business Headquarters

2-9-32 Nakacho, Musashino-shi, Tokyo, 180-8750 Japan

Phone: (81)-422-52-6768, Fax: (81)-422-52-6624

E-mail: tm@csv.yokogawa.co.jp

Represented by :

ML-14E