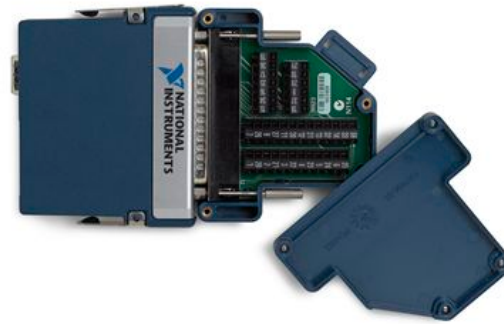


Last Revised: 2014-11-06 07:14:27.0

NI 9476

24 V, Sourcing Digital Output, 32 Ch Module



- 32 channels, 500 μ s digital output
- 6 V to 36 V output range, sourcing digital output
- 250 mA/ch maximum current drive on all channels
- 60 VDC, CAT I isolation
- Industry-standard 37-pin D-SUB connector
- -40 °C to 70 °C operating, 5 g vibration, 50 g shock

Overview

The NI 9476 is a 32-channel, 500 μ s sourcing digital output module that works in any NI CompactRIO or NI CompactDAQ chassis. Each channel is compatible with 6 V to 36 V signals, based on the external power supply, and features 1,000 Vrms withstand isolation from channel to earth ground. You can programmatically monitor the built-in overcurrent and short-circuit protection status of each channel. The NI 9476 works with industrial logic levels and signals to directly connect to a wide array of industrial relays, solenoids, and motors.

Recommended Accessories

-NI 9923 (or other 37-pin D-SUB connector)

Box Contents

- 1 NI 9476 C Series module
- 1 NI 9476 Operating Instructions and Specifications manual

[Back to Top](#)

Comparison Tables

Product Name	Signal Levels	Direction	Channels	Update Rate	Continuous Current	Connectivity
NI 9375	12, 24 V	Sinking Input, Sourcing Output	16 In, 16 Out	7 μ s In, 500 μ s Out	100 mA/ch	Spring Terminal, 37-Pin D-SUB
NI 9472	12, 24 V	Sourcing Output	8	100 μ s	750 mA/ch	Screw Terminal, 25-Pin D-SUB
NI 9474	5, 12, 24 V	Sourcing Output	8	1 μ s	1 A/ch	Screw Terminal
NI 9475	5, 12, 24, 48, 60 V	Sourcing Output	8	1 μ s	1 A/ch	25-Pin D-SUB
NI 9476	12, 24 V	Sourcing Output	32	500 μ s	250 mA/ch	37-Pin D-SUB
NI 9477	5, 12, 24, 48, 60 V	Sinking Output	32	8 μ s	1 A/ch (20 A per Module)	37-Pin D-SUB
NI 9478	5, 12, 24, 48 V	Sinking Output	16	7 μ s	1.2 A/ch	37-Pin D-SUB

[Back to Top](#)

Application and Technology

NI C Series Overview



NI C Series modules are engineered to provide high-accuracy measurements to meet the demands of advanced DAQ and control applications. Each module contains measurement-specific signal conditioning to connect to an array of sensors and signals, bank and channel-to-channel isolation options, and support for wide temperature ranges to meet a variety of application and environmental needs all in a single rugged package. With more than 100 C Series modules for measurement, control, and communication to choose from, you can connect your applications to any sensor on any bus.

Most C Series I/O modules work with both the NI CompactDAQ and NI CompactRIO platforms. The modules are identical, and you can move them from one platform to the other with no modification.

NI CompactRIO Platform



Powered by the LabVIEW reconfigurable I/O (RIO) architecture, CompactRIO combines an open embedded architecture with small size, extreme ruggedness, and hot-swappable industrial I/O modules. Each system contains an FPGA for custom timing, triggering, and processing with a wide array of available modular I/O to meet any embedded application requirement.

[Configure Your Complete NI CompactRIO System](#)

NI CompactDAQ Platform



NI CompactDAQ is a portable, rugged data acquisition platform that integrates connectivity and signal conditioning into modular I/O for directly interfacing to any sensor or signal. Using NI CompactDAQ with LabVIEW, you can easily customize how you acquire, analyze, present, and manage your measurement data. From research to development to validation, NI provides programmable software, high-accuracy measurements, and local technical support to help ensure you meet your exact measurement application requirements.

[Configure Your Complete NI CompactDAQ System](#)

[Back to Top](#)

Ordering Information

For a complete list of accessories, visit the product page on ni.com.

Products	Part Number	Recommended Accessories	Part Number
NI 9476 Digital Output Front-Mount			
NI 9476 with Front-Mount Accessories Requires: 1 Terminal Block ;	779140-01	Terminal Block: screwTerminal - NI 9923 Front-mount D-SUB to screw terminals	781503-01

[Back to Top](#)

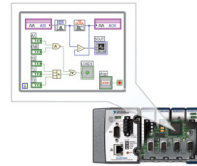
Software Recommendations

LabVIEW Professional Development System for Windows



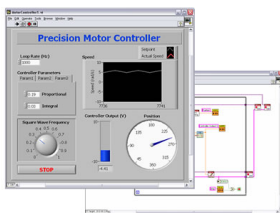
- Advanced software tools for large project development
- Automatic code generation using DAQ Assistant and Instrument I/O Assistant
- Tight integration with a wide range of hardware
- Advanced measurement analysis and digital signal processing
- Open connectivity with DLLs, ActiveX, and .NET objects
- Capability to build DLLs, executables, and MSI installers

NI LabVIEW FPGA Module



- Design FPGA applications for NI reconfigurable I/O (RIO) hardware targets
- Program with the same graphical environment used for desktop and real-time applications
- Execute control algorithms with loop rates up to 300 MHz
- Implement custom timing and triggering logic, digital protocols, and DSP algorithms
- Incorporate existing HDL code and third-party IP including Xilinx CORE Generator functions
- Included in the LabVIEW Embedded Control and Monitoring Suite

NI LabVIEW Real-Time Module



- Design deterministic real-time applications with LabVIEW graphical programming
- Download to dedicated NI or third-party hardware for reliable execution and a wide selection of I/O
- Take advantage of built-in PID control, signal processing, and analysis functions
- Automatically take advantage of multicore CPUs or set processor affinity manually
- Includes real-time OS, development and debugging support, and board support
- Purchase individually or as part of a LabVIEW suite

[Back to Top](#)

Support and Services

System Assurance Programs

NI system assurance programs are designed to make it even easier for you to own an NI system. These programs include configuration and deployment services for your NI PXI, CompactRIO, or Compact FieldPoint system. The NI Basic System Assurance Program provides a simple integration test and ensures that your system is delivered completely assembled in one box. When you configure your system with the NI Standard System Assurance Program, you can select from available NI system driver sets and application development environments to create customized, reorderable software configurations. Your system arrives fully assembled and tested in one box with your software preinstalled. When you order your system with the standard program, you also receive system-specific documentation including a bill of materials, an integration test report, a recommended maintenance plan, and frequently asked question documents. Finally, the standard program reduces the total cost of owning an NI system by providing three years of warranty coverage and calibration service. Use the online product advisors at ni.com/advisor to find a system assurance program to meet your needs.

Technical Support

Get answers to your technical questions using the following National Instruments resources.

- **Support** - Visit ni.com/support to access the NI KnowledgeBase, example programs, and tutorials or to contact our applications engineers who are located in NI sales offices around the world and speak the local language.
- **Discussion Forums** - Visit forums.ni.com for a diverse set of discussion boards on topics you care about.
- **Online Community** - Visit community.ni.com to find, contribute, or collaborate on customer-contributed technical content with users like you.

Repair

While you may never need your hardware repaired, NI understands that unexpected events may lead to necessary repairs. NI offers repair services performed by highly trained technicians who quickly return your device with the guarantee that it will perform to factory specifications. For more information, visit ni.com/repair.

Training and Certifications

The NI training and certification program delivers the fastest, most certain route to increased proficiency and productivity using NI software and hardware. Training builds the skills to more efficiently develop robust, maintainable applications, while certification validates your knowledge and ability.

- **Classroom training in cities worldwide** - the most comprehensive hands-on training taught by engineers.

- **On-site training at your facility** - an excellent option to train multiple employees at the same time.
- **Online instructor-led training** - lower-cost, remote training if classroom or on-site courses are not possible.
- **Course kits** - lowest-cost, self-paced training that you can use as reference guides.
- **Training memberships** and training credits - to buy now and schedule training later.

Visit ni.com/training for more information.

Extended Warranty

NI offers options for extending the standard product warranty to meet the life-cycle requirements of your project. In addition, because NI understands that your requirements may change, the extended warranty is flexible in length and easily renewed. For more information, visit ni.com/warranty.

OEM

NI offers design-in consulting and product integration assistance if you need NI products for OEM applications. For information about special pricing and services for OEM customers, visit ni.com/oem.

Alliance

Our Professional Services Team is comprised of NI applications engineers, NI Consulting Services, and a worldwide National Instruments Alliance Partner program of more than 700 independent consultants and integrators. Services range from start-up assistance to turnkey system integration. Visit ni.com/alliance.

[Back to Top](#)

Detailed Specifications

The following specifications are typical for the range –40 to 70 °C unless otherwise noted. All voltages are relative to COM unless otherwise noted.

Output Characteristics

Number of channels	32 digital output channels
Output type	Sourcing
Output voltage (V_O)	$V_{sup} - (I_O R_O)$
Power-on output state	Channels off
External power supply voltage range (V_{sup})	6–36 VDC
Continuous output current (I_O) per channel	
With 6–30 VDC supply voltage	250 mA max
With 30–36 VDC supply voltage	200 mA max
Output impedance (R_O)	0.3 Ω max
Continuous overvoltage protection (V_{sup})	up to 40 V max
Reversed-voltage protection	None
Current limiting	None
Short-circuit protection	Indefinitely protected when a channel is shorted to COM or to a voltage up to V_{sup}
Trip current for one channel	
With all other channels at rated current	3 A typ
With all other channels off	5 A typ
V_{sup} current consumption	28 mA max
Maximum update rate	40 μ s max
Propagation delay	500 μ s max
MTBF	1,091,425 hours at 25 °C; Bellcore Issue 2, Method 1, Case 3, Limited Part Stress Method



Note Contact NI for Bellcore MTBF specifications at other temperatures or for MIL-HDBK-217F specifications.

Power Requirements

Power consumption from chassis

Active mode	250 mW max
Sleep mode	25 μ W max

Thermal dissipation (at 70 °C)

Active mode	1.5 W max
Sleep mode	30 mW max

Physical Characteristics

If you need to clean the module, wipe it with a dry towel.

Weight	147 g (5.2 oz)
--------	----------------

Safety

Maximum Voltage ¹

Connect only voltages that are within the following limits.

$V_{\text{sup-to-COM}}$	36 VDC, Measurement Category I
-------------------------	--------------------------------

Measurement Category I is for measurements performed on circuits not directly connected to the electrical distribution system referred to as MAINS ² voltage. This category is for measurements of voltages from specially protected secondary circuits. Such voltage measurements include signal levels, special equipment, limited-energy parts of equipment, circuits powered by regulated low-voltage sources, and electronics.



Caution Do *not* connect the NI 9476 to signals or use for measurements within Measurement Categories II, III, or IV.

Isolation Voltages

Channel-to-channel	No isolation between channels
Channel-to-earth ground	
Continuous	60 VDC, Measurement Category I
Withstand	1,000 V_{rms} , verified by a 5 s dielectric withstand test

Safety Standards

This product is designed to meet the requirements of the following standards of safety for electrical equipment for measurement, control, and laboratory use:

- IEC 61010-1, EN 61010-1
- UL 61010-1, CSA 61010-1



Note For UL and other safety certifications, refer to the product label or the *Online Product Certification* section.

Hazardous Locations

U.S. (UL)	Class I, Division 2, Groups A, B, C, D, T4; Class I, Zone 2, AEx nC IIC T4
Canada (C-UL)	Class I, Division 2, Groups A, B, C, D, T4; Class I, Zone 2, Ex nC IIC T4
Europe (DEMKO)	EEx nC IIC T4

Environmental

National Instruments C Series modules are intended for indoor use only but may be used outdoors if installed in a suitable enclosure. Refer to the manual for the chassis you are using for more information about meeting these specifications.

Operating temperature (IEC 60068-2-1, IEC 60068-2-2)	–40 to 70 °C
Storage temperature (IEC 60068-2-1, IEC 60068-2-2)	–40 to 85 °C
Ingress protection	IP 40
Operating humidity (IEC 60068-2-56)	10 to 90% RH, noncondensing
Storage humidity (IEC 60068-2-56)	5 to 95% RH, noncondensing
Maximum altitude	2,000 m
Pollution Degree (IEC 60664)	2

Shock and Vibration

To meet these specifications, you must panel mount the system.

Operating vibration	
Random (IEC 60068-2-64)	5 g_{rms} , 10 to 500 Hz
Sinusoidal (IEC 60068-2-6)	5 g, 10 to 500 Hz
Operating shock (IEC 60068-2-27)	30 g, 11 ms half sine, 50 g, 3 ms half sine, 18 shocks at 6 orientations

Electromagnetic Compatibility

This product is designed to meet the requirements of the following standards of EMC for electrical equipment for measurement, control, and laboratory use:

- EN 61326 EMC requirements; Industrial Immunity
- EN 55011 Emissions; Group 1, Class A



Note For EMC compliance, operate this device with shielded cables.

CE Compliance

This product meets the essential requirements of applicable European Directives, as amended for CE marking, as follows:

- 2006/95/EC; Low-Voltage Directive (safety)
- 2004/108/EC; Electromagnetic Compatibility Directive (EMC)



Note For the standards applied to assess the EMC of this product, refer to the *Online Product Certification* section.

Online Product Certification

Refer to the product Declaration of Conformity (DoC) for additional regulatory compliance information. To obtain product certifications and the DoC for this product, visit ni.com/certification, search by module number or product line, and click the appropriate link in the Certification column.

Environmental Management

National Instruments is committed to designing and manufacturing products in an environmentally responsible manner. NI recognizes that eliminating certain hazardous substances from our products is beneficial not only to the environment but also to NI customers.

For additional environmental information, refer to the *NI and the Environment* Web page at ni.com/environment. This page contains the environmental regulations and directives with which NI complies, as well as other environmental information not included in this document.

Waste Electrical and Electronic Equipment (WEEE)



EU Customers At the end of their life cycle, all products *must* be sent to a WEEE recycling center. For more information about WEEE recycling centers and National Instruments WEEE initiatives, visit ni.com/environment/weee.htm.

电子信息产品污染控制管理办法（中国 RoHS）



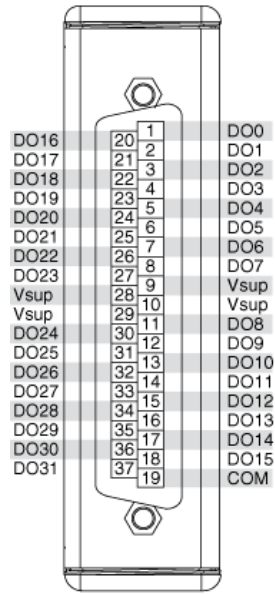
中国客户 National Instruments 符合中国电子信息产品中限制使用某些有害物质指令 (RoHS)。关于 National Instruments 中国 RoHS 合规性信息，请登录 ni.com/environment/rohs_china。(For information about China RoHS compliance, go to ni.com/environment/rohs_china.)

¹ The maximum voltage that can be applied or output between V_{sup} and COM without creating a safety hazard.

² MAINS is defined as the (hazardous live) electrical supply system to which equipment is designed to be connected for the purpose of powering the equipment. Suitably rated measuring circuits may be connected to the MAINS for measuring purposes.

[Back to Top](#)

Pinouts/Front Panel Connections



NI 9476 Pin Assignments

[Back to Top](#)

©2014 National Instruments. All rights reserved. CompactRIO, FieldPoint, LabVIEW, National Instruments, NI, and ni.com are trademarks of National Instruments. Other product and company names listed are trademarks or trade names of their respective companies. A National Instruments Alliance Partner is a business entity independent from National Instruments and has no agency, partnership, or joint-venture relationship with National Instruments.

[My Profile](#) | [RSS](#) | [Privacy](#) | [Legal](#) | [Contact NI](#) © 2014 National Instruments Corporation. All rights reserved.