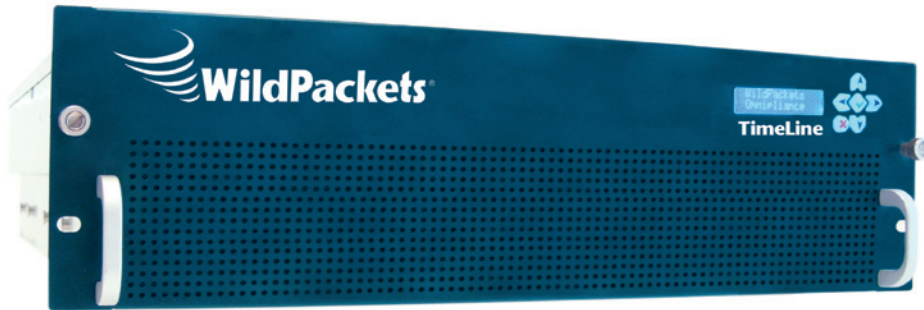




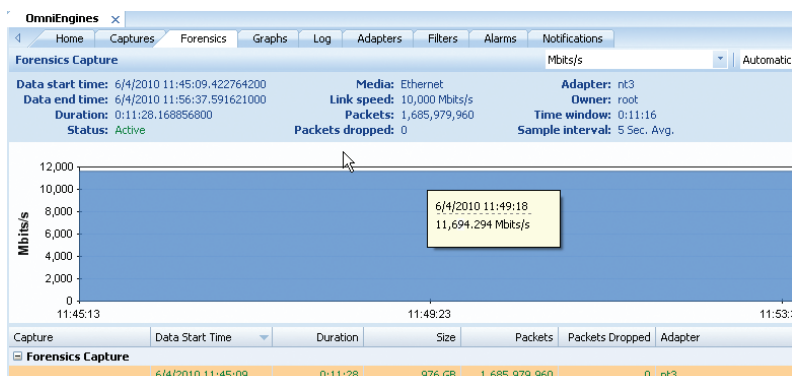
TimeLine™ Network Recorder



The TimeLine™ network recorder takes capture and analysis of network and media traffic on highly utilized networks to a whole new level. TimeLine is the fastest, continuous network traffic capture and analysis solution in its class that displays the key network and media statistics in real-time with no negative impact on write-to-disk rate. TimeLine sets a new standard in capture-to-disk speeds, offering unsurpassed network traffic collection and recording, the most complete sets of real-time statistics, quick data rewinding, simultaneous real-time network monitoring, and rapid search and forensic analysis of collected data. With TimeLine, network issues of any type can be identified, analyzed, reconstructed, and resolved quickly and efficiently.

TimeLine seamlessly blends aggregation of data from multiple 10 Gigabit (10G) ports with dynamic hardware filtering and packet slicing to provide unprecedented visibility into highly utilized networks without losing critical data. Recorded network data can be retrieved rapidly using an easy to understand visualization format for detailed, in-depth search and forensic analysis, eliminating costly and time-consuming efforts to reproduce intermittent network issues. In addition to providing the fastest network recording solution, TimeLine is ideal for real-time, 24x7 network monitoring and analysis.

Other network capture solutions often claim “line-rate” analysis based on the packet capture specifications of the embedded network capture card. However, packet capture performance varies greatly from the actual rate at which packets are written to disk without data loss. TimeLine captures and monitors sustained traffic rates of greater than 11 Gbps, writing those packets to disk without data loss for forensics analysis, significantly faster than competing products.



Capturing to disk and monitoring sustained traffic rates of greater than 11 Gbps.

Benefits for network administrators:

- 100% Visibility into highly utilized networks
- Visualize data over long time periods
- Zoom in on network anomalies that require deeper investigation
- Rapidly resolve network issues in real-time, before they become major problems
- Optimize network and application performance
- Baseline the entire network to understand the impact of deploying new technologies, such as VoIP or video
- Mitigate security threats
- Improve overall end-user productivity

Benefits for CIOs and business managers:

- Easily communicate service level compliance to the organization
- Audit and track network activity for HR compliance violations
- See the financial effect of new application deployments
- Allocate IT Capital Expenditure budgets more efficiently

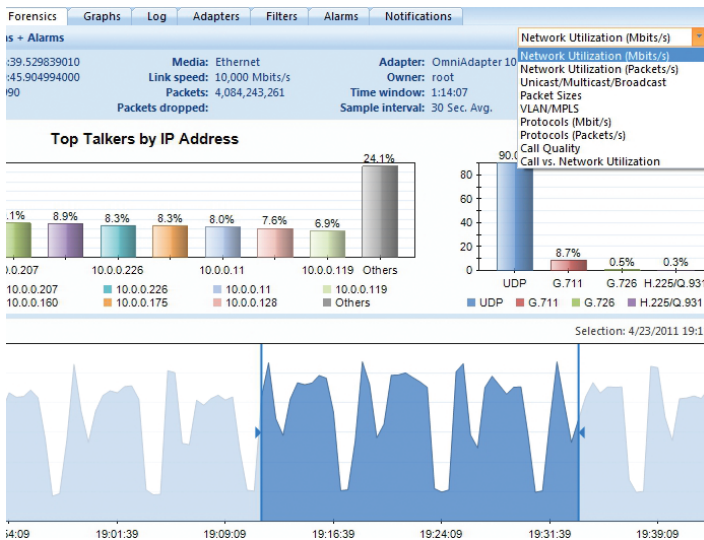
Unique TimeLine features include:

- Fastest, continuous network traffic capture available
- Interactive, detailed timeline visualization of network and media statistics in real-time
- Rapid, post-capture forensics search and data retrieval, including deep packet inspection
- Real-time, distributed monitoring and alerting for both network and media data in a single solution
- On-the-fly application reconstruction
- Intuitive, easy-to-use User Interface

Network Recording and Real-Time Statistical Display — Simultaneously

Taking advantage of WildPackets® leading-edge capture-to-disk technology, TimeLine displays critical network and media statistics in real-time, including network utilization, top nodes, top protocols, protocols per second, packet sizes, packets per second, call quality, and call vs. network utilization while capturing all network traffic to disk for forensics analysis.

Advanced port aggregation enables full-duplex network traffic capture for complete visibility across the entire enterprise network.

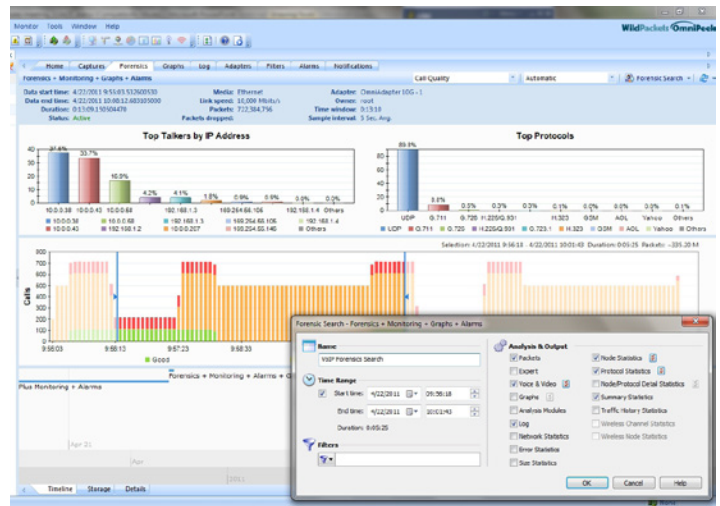


Fast data recording while displaying real-time network statistics.

Rapid Forensics Search and Retrieval

TimeLine network recorder analyzes historical network traffic and rewinds data quickly for troubleshooting, security attack analysis, human resource and policy compliance, application performance analysis, and business transaction analysis.

The TimeLine graph allows visualization and interaction with statistics generated from large amounts of network data, providing an overall basis for performing detailed searches of specific time ranges. Several pre-defined forensics search templates as well as customized search options are available, making searches easy and fast.



Rapid Forensics Search using TimeLine graph and pre-defined Forensics template.

Easy-to-use Graphical Interface

Fully integrated and bundled with OmniPeek® Connect—WildPackets' intuitive, easy-to-use graphical interface—TimeLine is also the ideal real-time, 24/7 network monitoring and analysis solution. Connecting to any number of TimeLine network recorders, OmniPeek Connect can rapidly analyze and troubleshoot any issue across the entire enterprise network. Multiple remote locations can be managed and monitored right from the network administrator's desk.

For advanced application reconstruction and analysis, OmniPeek Enterprise, WildPackets' flagship network analyzer, can be used in conjunction with TimeLine to reconstruct VoIP, IM, Email, and Web applications in their original format, making the troubleshooting process much quicker and more intuitive. It also provides advanced Video and VoIP analysis, including a customized dashboard, signaling and media analyses, VoIP playback, and Visual Expert Analysis. And with WildPackets add-on analysis modules, OmniPeek Enterprise offers extensive capabilities such as network and application latency measurement, NetFlow/sFlow/SNMP statistics collection and analysis, complete application reconstruction, and more.



Top-Down monitoring and analysis view of overall VoIP and Video over IP network health.

TimeLine network recorder is available in the following bundled configurations:

TimeLine 10G 8T/16T/32T

OmniPeek Connect	3
Pre-installed OmniEngine	Yes
OmniAdapter	High-performance, PCI-E, 2-Port 10 Gigabit Adapter with LR or SR XFPs
Rackmount 3U Chassis	Yes
Processor	Two Intel Xeon Quad-Core X5560 2.8GHz
RAM	18GB
Capture Storage	8TB/16TB/32TB SATA 7200 RPM
OS and Data Drives	160GB
PCI-E Slot	PCI-E 2.0 x8
On-board Ethernet Ports	10/100/1000

TimeLine 1G 8T/16T/32T

OmniPeek Connect	3
Pre-installed OmniEngine	Yes
OmniAdapter	High-performance, PCI-E, 4-Port Gigabit Adapter with Fiber/Copper SFPs
Rackmount 3U Chassis	Yes
Processor	Two Intel Xeon Quad-Core X5560 2.8GHz
RAM	18GB
Capture Storage	8TB/16TB/32T SATA 7200 RPM
OS and Data Drives	160GB
PCI-E Slot	PCI-E 2.0 x8
On-board Ethernet Ports	10/100/1000

Hardware Options

TimeLine Network Recorder includes one OmniAdapter™ analysis card — OmniAdapter 1G / OmniAdapter 10G — depending on the configuration. Additional OmniAdapters can be added as necessary.

OmniAdapter 10G

WildPackets' OmniAdapter 10G is a high performance, PCI Express, full-duplex 10 Gigabit Network Analyzer Card with 2x10 Gbps optical interfaces that has been optimized for monitoring and troubleshooting traffic on 10 Gigabit Ethernet networks. The network adapter is available with 1x850nm MFF XFP or 1x1310nm SMF XFP optical transceivers with LC connectors.

OmniAdapter 1G

The OmniAdapter 1G is a high performance network analyzer card that supports up to 2 full-duplex or 4 half-duplex connections providing advanced monitoring and troubleshooting of Gigabit networks.

OmniAdapter 1G is a four-port, PCI Express network analyzer card available in the following configurations — four SFP cages, four RJ45 ports, and two SFP cages and two RJ45 ports.

WildPackets Distributed Network Analysis

WildPackets gives network engineers real-time visibility into every part of the network—simultaneously from a single interface—

including 10/100, Gigabit, 10G Ethernet, 802.11 wireless, and VoIP. Using OmniPeek's local capture capabilities, centralized console, distributed OmniEngine™ intelligent software probes, Omnipliance® and TimeLine network recorders, and Expert Analysis, engineers can monitor their entire network, rapidly troubleshoot faults, and fix problems to maximize network uptime and user satisfaction.

About WildPackets, Inc.

WildPackets develops hardware and software solutions that drive network performance, enabling organizations of all sizes to analyze, troubleshoot, optimize, and secure their wired and wireless networks. WildPackets products are sold in over 60 countries and deployed in all industrial sectors. Customers include Boeing, Chrysler, Motorola, Nationwide, and over 80 percent of the Fortune 1000. WildPackets is a Cisco Technical Development Partner (CTDP). For more information, visit www.wildpackets.com.



1340 Treat Blvd, Suite 500 | Walnut Creek, CA 94597
(925)937-3200 | fax (925)937-3211 | www.wildpackets.com