

SMB Network Management Kits

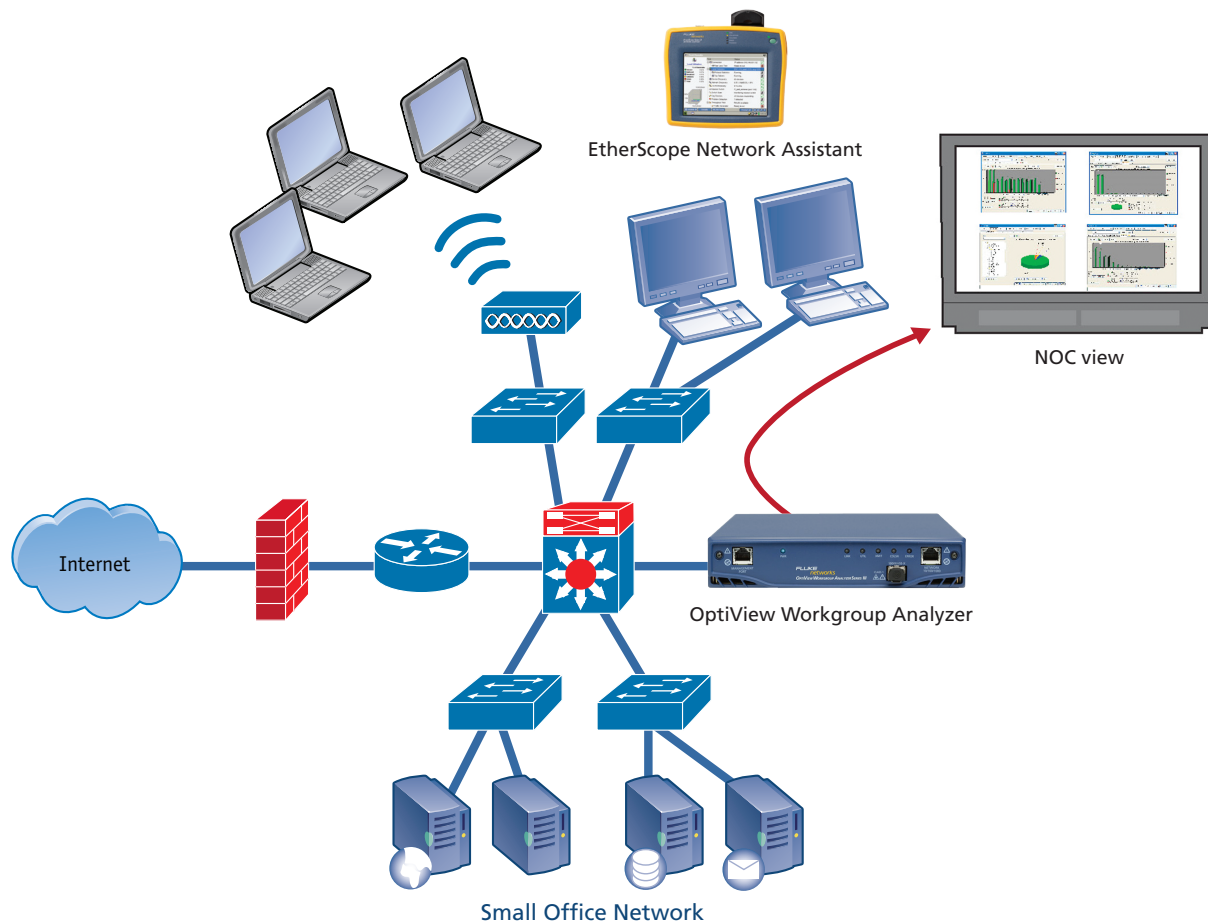
Save 20% off new kits to help you monitor the core 24/7 and troubleshoot frontline problems fast

Network managers in SMB organizations often face the same challenges as the “big networks” but have been sold “lightweight” tools that do not have the capabilities needed to solve big problems. At the same time, the SMB network manager needs multi-function tools that can help with all other aspects of network management: deploying new applications and technologies, managing network changes, securing the network, and optimizing network performance.

Now, you don’t have to sacrifice network visibility and performance. With the combined power of the OptiView® Network Analyzer and the EtherScope™ Network Assistant, SMB network managers have the tools to monitor and optimize network and application performance, and the visibility needed to solve ‘frontline’ network problems fast.

Solution Deployment

Improve network and application performance, customer service, productivity and reduce IT costs by installing an OptiView® Workgroup Analyzer centrally, always-on in the core for real-time analysis to help ensure optimal network performance. Remotely access the analyzer from anywhere in the network: multiple remote control sessions allows users to set up customized “NOC views” to monitor different facets of network operations.

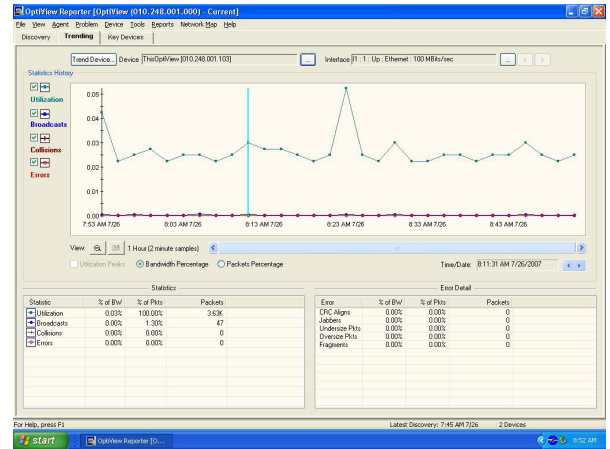


Use the EtherScope™ Network Assistant for portable troubleshooting when performance issues are detected by the Workgroup Analyzer. Quickly and easily detect and identify network bottlenecks by executing throughput tests between the two devices. Move up to the OPV-SMB/S for interface performance trending, alarms and notifications when problems occur and add Wireless LAN troubleshooting capabilities to the EtherScope.



Network Monitoring

The OptiView analyzer provides real-time statistics for network traffic enabling the user to understand how network resources are being used, determine which hosts may be over-utilizing server bandwidth and increase user satisfaction with faster response times for networked applications. Monitor key devices and network services with automated problem detection. With OptiView Reporter (SMB/S bundle), trend key interfaces for utilization, broadcasts, collisions, errors, and utilization peaks for the last hour, day, week, month, three months, six months, or one year. Also, get one-click visibility into the status of all of your key devices - these devices can include servers, switches, routers, or any other device you choose. This view shows you the green/red, up/down status of each device, name and address information, as well as when the last state change occurred.

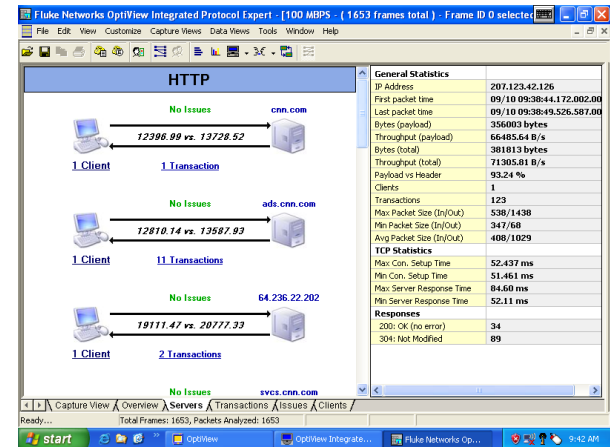


Interface trending view

Application Performance Troubleshooting

The OptiView Application Troubleshooting Expert speeds up troubleshooting application and network performance issues by automatically validating that key network services are available and operating correctly, ensuring that server and application connectivity is accessible by opening specific TCP ports on servers and reporting the round trip time as a combination of network latency and server connection setup time. A combination of layer 2 and layer 3 trace routes identifies the entire network path between the application client and the application server. Server resource utilization may also be viewed.

With Protocol Expert (SMB/S bundle), also get detailed application flow analysis for various protocols such as DNS, DHCP, HTTP, HTTPS, SMTP and SMB. A bounce chart shows at-a-glance information for connection setup times, connection setup packets, error packets and transport layer packets. For network related performance problems, the expert will automatically categorize the problems detected by OSI layers.



Expert analysis

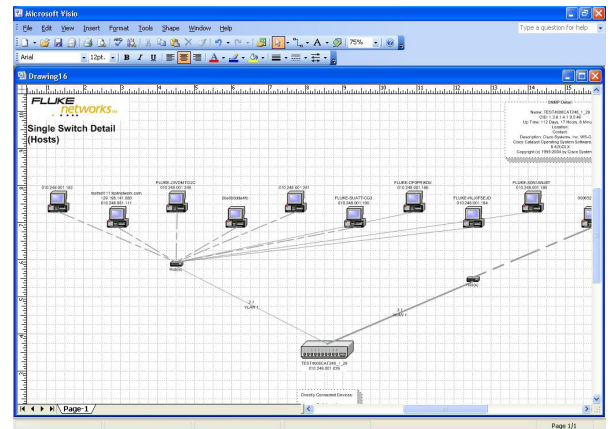
Frontline LAN and WLAN Troubleshooting

A comprehensive set of LAN and WLAN Tests (WLAN in SMB/S bundle) help analyze, isolate and solve access layer network problems fast – or at least prove it's not the network. Easy to use and carry, featuring a compact and ruggedized platform, bright color touch screen, intuitive UI and on-board help – the EtherScope analyzer is ready to assist when it's time for action. With advanced diagnostics for switched environments, EtherScope measures and documents Ethernet link performance at rates up to 1 Gigabit. Test cabling, verify and edit switch and access point configurations, and confirm network connectivity and availability of key services.



Automated Discovery, Reporting, Documentation and Mapping

Keeping network documentation up-to-date is a never-ending task, but current documentation is essential to successful network management and troubleshooting. With the OptiView analyzer, the task of updating is dramatically simplified. While viewing the statistics, discovery or detail screens, pressing the Reports key will generate HTML reports on Protocols, Top Hosts, Top Conversations, Devices, Networks, Problems and many more. For advanced documentation, OptiView Reporter (SMB/S bundle) can automatically import the OptiView Analyzer data for reporting, trending and event notification. OptiView Reporter's integration with Microsoft® Office Visio® diagramming program automatically creates network maps showing the links between your servers, switches, routers and hosts.



Save 20% off new SMB Network Management Kits when purchasing the OptiView® Workgroup Analyzer and EtherScope™ together in a kit!

Network Management & Reporting Pro Kit

The SMB Network Management & Reporting Pro Kit includes everything needed for "always-on" monitoring, reporting and troubleshooting the core – plus portable troubleshooting of the frontline LAN and WLAN.

OPV-SMB/S

Includes OPVS3-WGA/GIG/DSVS + ES2-PRO-SX/I

- OptiView Workgroup Analyzer with Network Services and Application Connectivity Tests
- OptiView Reporter Pro
- OptiView Protocol Expert
- EtherScope Series II Network Assistant Pro (LAN + WLAN)

SMB Network Management Kit

The SMB Network management Kit includes everything needed for "always-on" monitoring and troubleshooting the core – plus portable troubleshooting of the frontline LAN.

OPV-SMB

Includes OPVS3-WGA/GIG + ES2-LAN-SX

- OptiView Workgroup Analyzer with Network Services and Application Connectivity Tests
- EtherScope Series II Network Assistant (LAN)



Save 20%
off new
SMB Network
Management
Kits

NETWORK SUPERVISION

Fluke Networks
P.O. Box 777, Everett, WA USA 98206-0777

Fluke Networks operates in more than 50 countries worldwide. To find your local office contact details, go to www.flukenetworks.com/contact.

©2009 Fluke Corporation. All rights reserved.
Printed in U.S.A. 3/2009 3461588 D-ENG-N Rev A