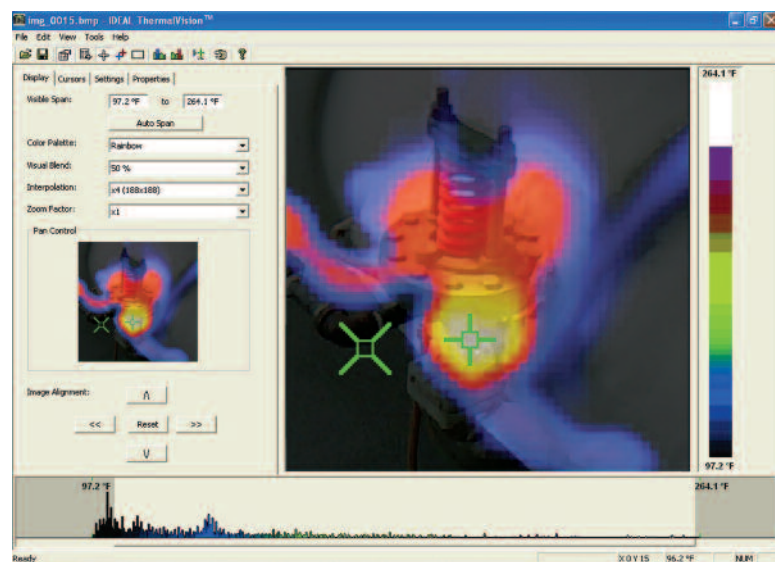




HeatSeeker™ Thermal Imager



ThermalVision™ PC Software Included

Easy-to-use software allows image download to PC for analysis.

Features

- View, edit and analyze images
- Automatic report generating capabilities
- Disk also includes user manual

Description	Cat No.
HeatSeeker™ Thermal Imager, Removable Handle, Carrying Case, Power Supply, ThermalVision PC Software and USB Cable	61-844

Accessories (included)	
USB Cable	61-844USB
Camera Handle	61-844HAN
Carrying Case	61-844CC
Power Supply	61-844PS
ThermalVision Software	61-844SW
Accessories (optional)	
Light Shade	61-844LS
Car Charger	61-844CAR



Innovation with a Purpose.

IDEAL INDUSTRIES, INC.
Becker Place, Sycamore, IL 60178, USA / 815-895-5181 • 800-435-0705 in USA

International offices:
Australia • Brazil • Canada • China • Germany • Mexico • Puerto Rico • UK
For complete sales office contact information, visit us at:
www.idealindustries.com • www.testersandmeters.com

©2009 IDEAL INDUSTRIES, INC. • Printed in U.S.A. • Form No. P-2856 • Rev. 1/09

IDEAL Test & Measurement. Designed for maximum performance and accuracy.

Electricians trust IDEAL to provide instruments for the needs of professionals — making the job easier and safer, and supported by the finest level of customer service and technical support in the industry.



TightSight® Clamp Meters

(61-764, 61-766, 61-768, 61-772, 61-774)

- Unique TightSight® bottom display
- Measures up to 660AAC
- Voltage-presence warning on all lead functions (selectable audible)
- Bright, bold backlit display
- Tapered jaws with hook tip
- Max/min/inrush



Insulation Meter

(61-797)

- Checks new and existing installations for proper insulation
- Checks motor windings for breakdowns in insulation
- Calculates PI and DAR automatically
- Tests at 50/100/250/500/1000V



3-Phase Power Analyzer

(61-805, 61-806, 61-807)

- True RMS
- Single- or three-phase measurements
- Data logging (1MB memory)
- Up to one month of recording time
- 4-channels for voltage measurements



Infrared (IR) Thermometer

(61-685)

- Measurement range of -76° to 932° F
- Single-spot laser sighting
- Maximum, Minimum, Difference (Δ) and Average temperature displays
- Programmable High and Low Alarms
- Supports K-type Thermocouple
- Adjustable emissivity for maximum accuracy

For complete details on the full line of IDEAL Test & Measurement products, visit www.testersandmeters.com.

HeatSeeker™ Thermal Imager



Measure temperatures accurately and cost-effectively

- Easy-to-use maintenance monitoring tool
- Auto hot/cold tracker
- Image blending of thermal and digital
- Troubleshoot potential problems quickly
- Mark images with text and voice annotation

Overlays a thermal image on top of a digital image for easy identification of potential problem areas



HeatSeeker™ Thermal Imager

Troubleshoot and identify potential problems before they happen with the IDEAL HeatSeeker™ Thermal Imager. What makes HeatSeeker so useful are the dual cursors that instantly locate the hottest and coldest temperatures on a live screen, and the camera's ability to overlay a thermal image on top of a digital image for easy on-the-job decision making. HeatSeeker's easy set-up and operation make it a cost-effective tool for electrical service, industrial maintenance and building inspection.



Side door allows quick access to headphone and USB connections, charging port and removable Micro SD card

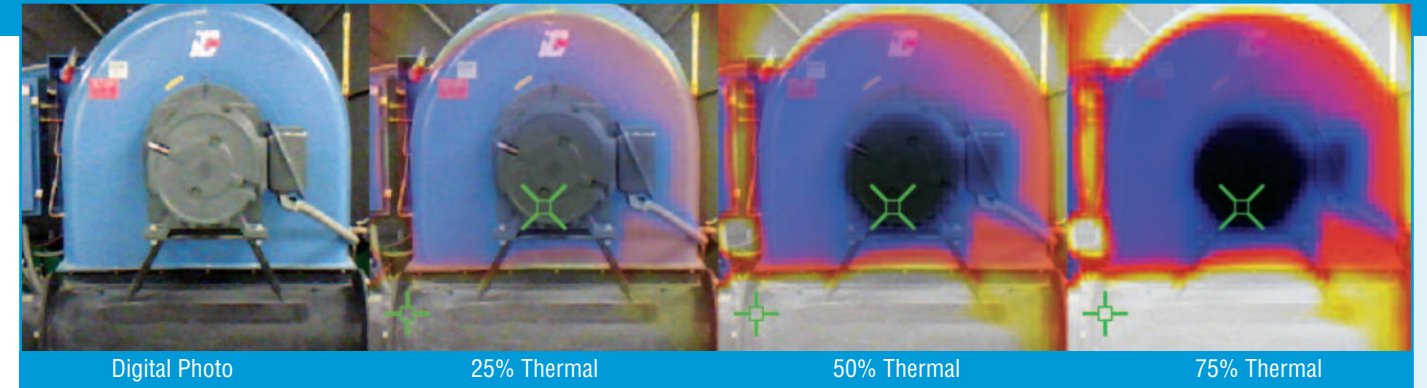


Removable handle



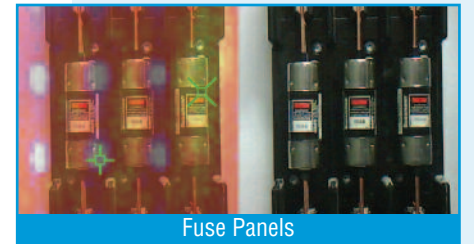
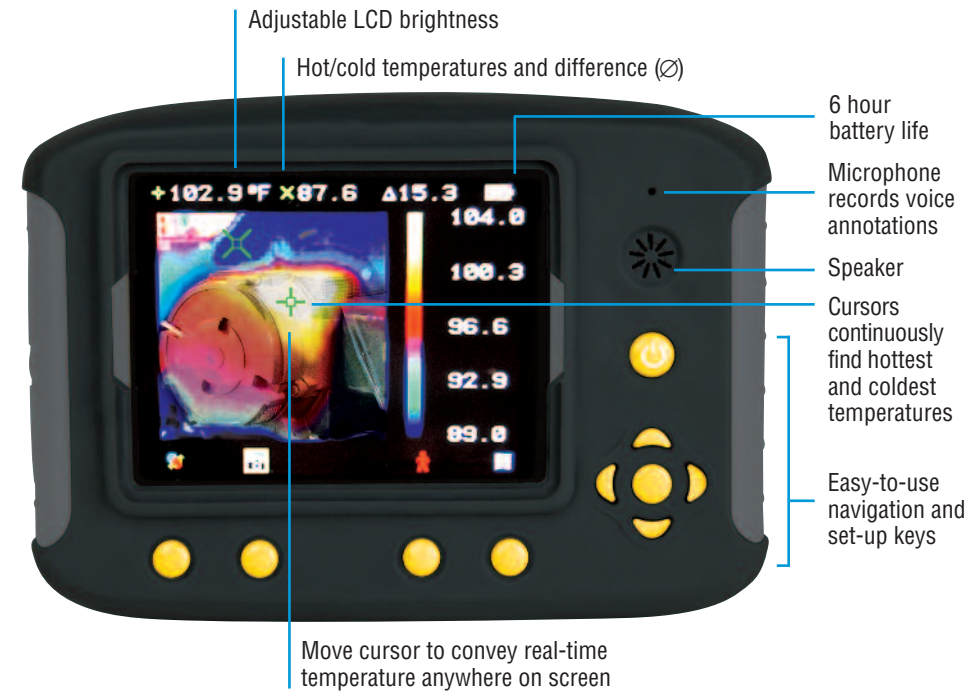
Features

- Blended thermal/digital image
- Hottest/coldest temperatures displayed instantly on live screen
- 1,849 temperature measurements live on camera screen
- Class II Laser
- Built-in LED illuminator
- High and low temperature alarms
- Mark images with text and voice annotation
- Measurement range of 14° F to 660° F
- Adjustable emissivity for maximum accuracy
- Accuracy of +/- 2% or +/- 4° F
- 6-hour battery life
- Tripod mountable
- Carrying case included
- ThermalVision PC software included
- 2-year warranty

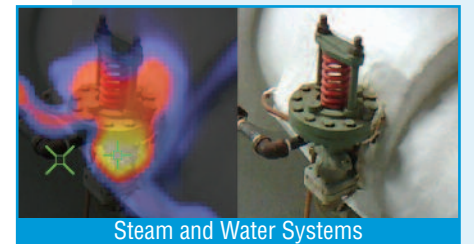


Adjustable Blended View for Ease of Use

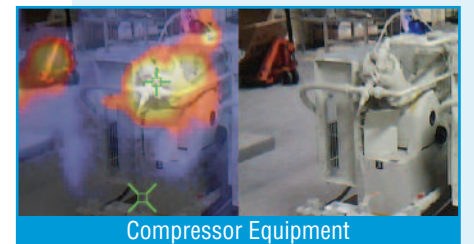
The HeatSeeker captures both a full infrared image and a digital photo. The thermal image can be overlaid on top of the digital image in various % blends for clarity.



Fuse Panels



Steam and Water Systems



Compressor Equipment

Heat Seekers: HOT COLD

The hottest and coldest temperatures are automatically located by the dual cursors to quickly and accurately identify problem areas.

HeatSeeker™ provides real-time analysis and is ideal for:

Electrical Safety

- Identifies overloaded circuits, loose/corroded connections and failing breakers in electrical panels
- Identifies blown fuses, overloads, phase imbalance and harmonics problems
- Identifies hot spots from high resistance connections

Energy Efficiency

- Identifies inefficient heating and cooling transfer
- Identifies draft sources from missing insulation in rafters/walls/floors
- Identification of problem areas helps reduce heat gain/loss and carbon footprint

Building Maintenance

- Discovers sources of moisture in roofs and areas behind walls
- Checks air distribution for blockages in pipes, damaged duct work and insulation gaps
- Checks fluid distribution for stuck valves and burst pipes

Preventive Maintenance

- Identifies equipment efficiencies/inefficiencies
- Applications include motors, pumps, boilers, radiators, heaters, chillers and transformers