

Discover What's Possible™

Anritsu

MT9080 Series

ACCESS Master™

1.31/1.55/1.65 μm (SM)



*All-New Field Measuring Instrument Integrating Functions
Required for FTTx Optical Fiber Installation and
Maintenance in One Unit*

- **SM 1310 nm/1550 nm/1650 nm OTDR for optical fiber installation and maintenance**
- **Functions and performance supporting FTTx (FTTB, FTTC, FTTH, PON)**
- **Short dead zone of 1 m (event)**
- **Light source and optical power meter function provided as standard**

Effective Performance and Functions for Installation and Maintenance of Optical Fibers

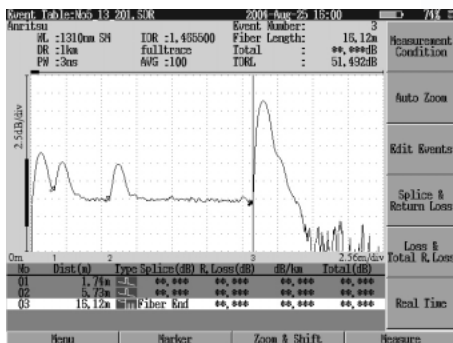
Simple operation

The necessary measurement and functions can be selected and operated from the top menu.



Short dead zone: 1 m (event)

High resolution effective for installation and maintenance of expanding FTTx is achieved.

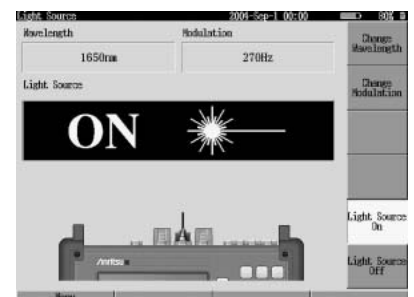


Dynamic range for FTTx: Up to 26.5 dB

Sufficient performance for evaluating FTTx optical fibers is provided.

Light source optical power meter function, and visible light source

A light source for identification tester and optical power meter function are provided as standard and a visible light source is optionally available so as to support installation and maintenance of optical fibers with one MT9080 Series unit.



The functions and performance required for field measuring instruments are changing according to network trends. Access providers are now starting broadband optical access services such as FTTB, including Gigabit Ethernet, for enterprises, FTTC and FTTP for general homes.

Since most optical fiber networks are presently installed by metro providers and access providers, many high-cost-performance, truly easy-to-use field measuring instruments that contain necessary and sufficient functions and performance in a compact manner will be needed for installation and maintenance of the expanding FTTx networks, instead of expensive and high-performance field measuring instruments that can measure up to the core and that are used by only a few expert technicians. The MT9080 Series ACCESS Master is a compact and high-cost-performance OTDR for installation and maintenance of FTTx optical fibers, with the following functions:

- Light weight at just 2.2 kg. Compared with the traditional MW9076 Series, the MT9080 Series ACCESS Master is more compact and light-weighted and therefore can be easily used in the field.
- Integrates an OTDR, light source, and optical power meter function as standard, enhancing the maintenance function. A visible light source (optional) can also be integrated at the same time.
- Achieves 1 m event dead zone, which is effective for short-distance optical fiber evaluation in FTTx. The MT9080 Series ACCESS Master exhibits its full capability in identifying the location of adjacent fault points.
- Sufficient dynamic range performance for installation and maintenance of FTTx fibers (50 km or shorter)
- Simple menu-based operation



Compact and lightweight

Compared with the traditional MW9076 Series, the MT9080 Series ACCESS Master is more compact and light-weighted and therefore can be easily used in the field.



User-Friendly Operation & All-in-one

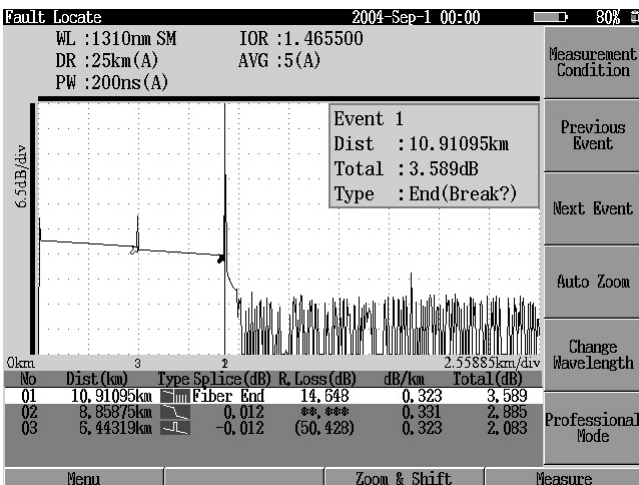
● Simple operation from the top menu

The top menu shown below appears when the MT9080 Series ACCESS Master is activated. You can return to this screen any time by pressing the top menu button (panel key) even if the measurement window is displayed in the selection area. Necessary test items for the user can therefore be executed smoothly.



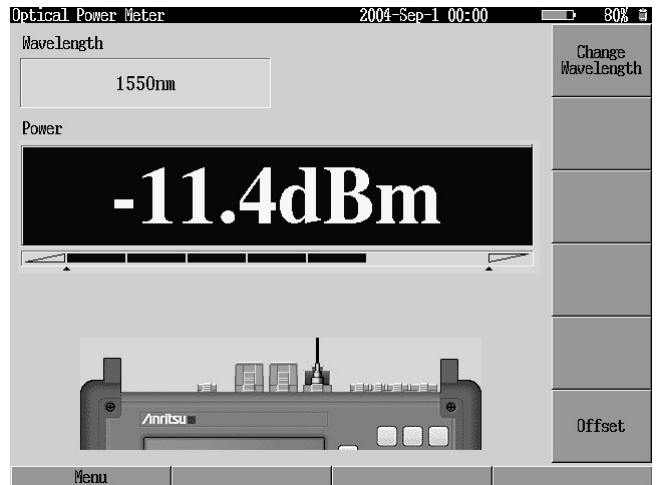
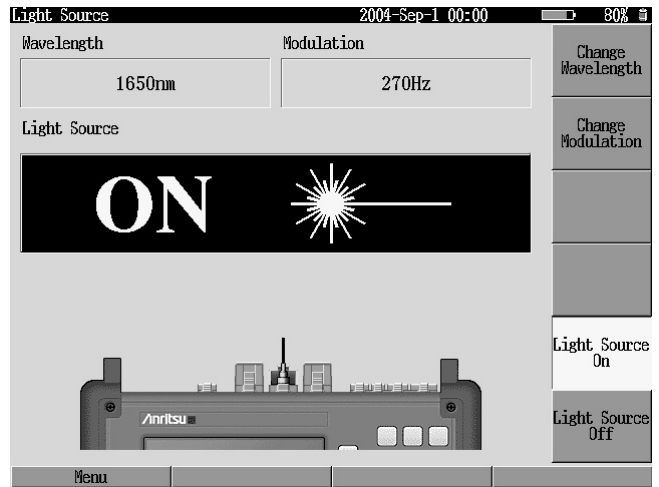
● Easily identifies failure location with enhanced maintenance function

If a failure occurs, the failure location should be identified immediately and recovery should be made as soon as possible. The MT9080 Series ACCESS Master offers a failure identification mode for identifying the failure location easily. A pulse test is automatically started by pressing the measurement button, and the failure location is displayed enlarged on the screen.



● Provides light source and optical power meter functions as standard, as well as optionally available visible light source

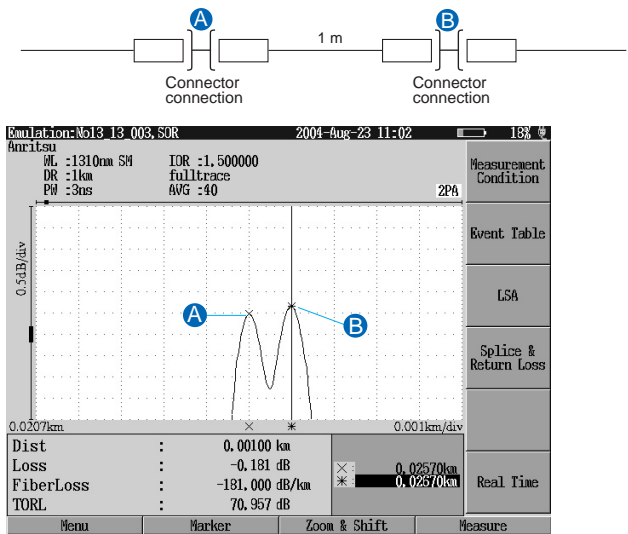
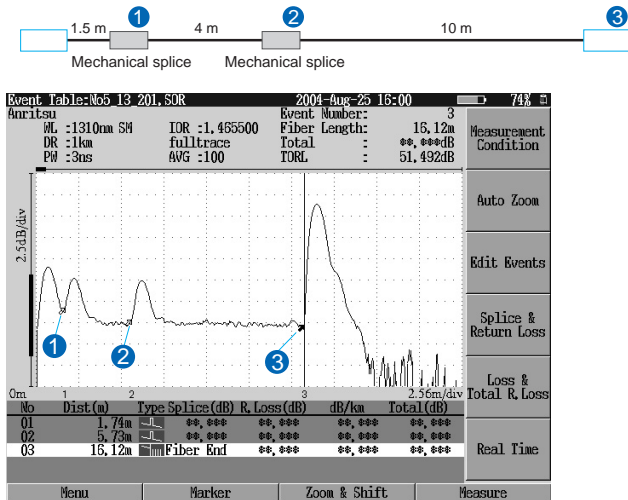
The concept of the MT9080 Series ACCESS Master is to support the functions required for optical fiber installation and maintenance as standard. The MT9080 Series ACCESS Master comes equipped with a light source for identification tester and an optical power meter function as standard. Together with the optional visible light source, optical fiber installation and maintenance are supported with only one MT9080 Series unit.



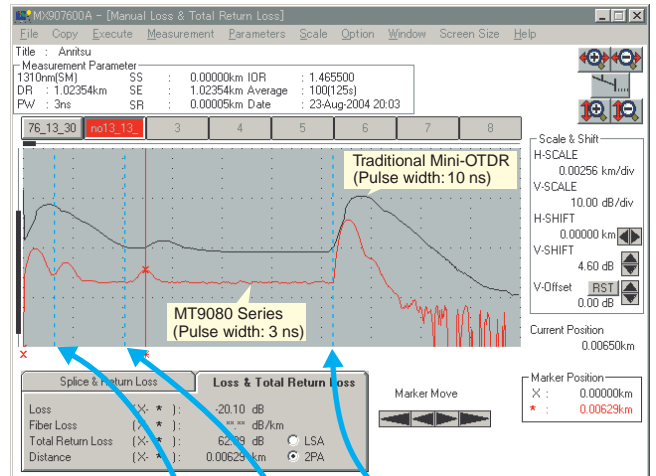
Short Dead Zone

● Short dead zone of 1 m (event) Effective for FTTx

The MT9080 Series ACCESS Master has achieved an event dead zone of 1 m and a high sampling resolution of 5 cm, so the connection status in a building and the failure location, which were hard to analyze, can be analyzed and identified. This OTDR is small but has a high performance.



● The MT9080 Series realize short dead zone more than traditional Mini-OTDR



Compact, Lightweight, and Convenient Functions

● Compactness, lightweight (2.2 kg), and non-HDD

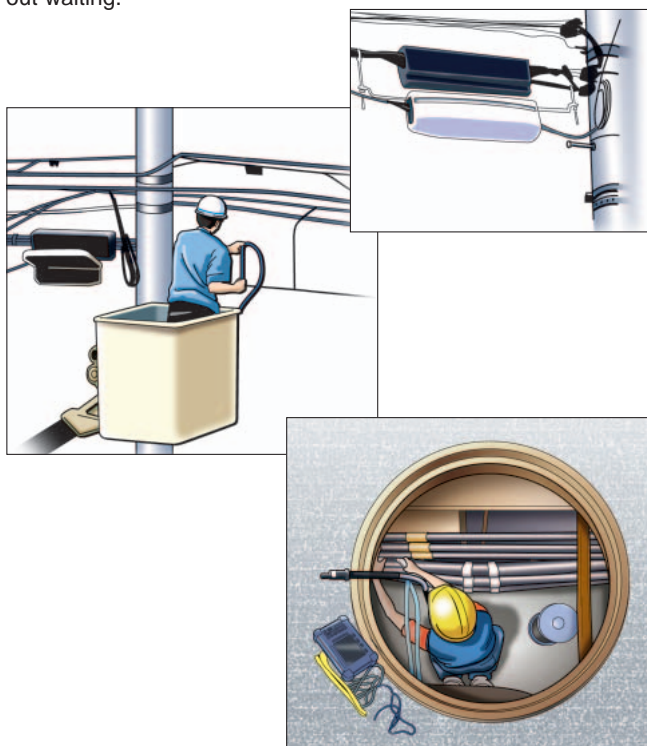
One of the requirements for field measuring instruments is that they can be carried into any field location such as the top of a telephone pole or in a manhole; in other words, they must be able to be used in any measurement location. The MT9080 Series ACCESS Master is smaller and lighter than the traditional MW9076 Series. The user can concentrate on measurement without worrying about the measurement location. Further, the MT9080 Series ACCESS Master is a non-hard-disk measuring instrument, so the system is not started from the hard disk. Stable operation is thus ensured regardless of shock and vibration. Since this compact unit can be brought into any field location, the MT9080 Series ACCESS Master can accommodate sudden problems and support installation and maintenance of optical fibers to the customer's satisfaction. The MT9080 Series ACCESS Master is handy and convenient in the field.

● Dynamic range supporting FTTx

The MT9080 Series ACCESS Master realizes a dynamic range performance for installation and maintenance of optical fibers up to approximately 50 km.

● High-speed starting for 15 or less seconds

The MT9080 Series ACCESS Master has realized high-speed starting. It is 15 or less seconds until a top menu is displayed from a power supply injection. Therefore, it puts into work, without waiting.



● Telcordia format (SR-4731) supported

The Telcordia format (SR-4731), the common format for OTDRs, is supported.

● More than 1,000 waveforms recordable in the internal memory; more than 30,000 waveforms recordable with an additional USB memory*1

The MT9080 Series ACCESS Master can record files of more than 1,000 waveforms in the internal memory. If a USB memory is inserted into the USB port, files of more than 30,000 waveforms*1 can be recorded.

*1: When a 512 MB USB memory is used.

● Communication light check

If the fiber being tested contains communication light, the OTDR cannot perform measurement successfully. Also, the pulse light from the OTDR may damage the receiver of a system such as WDM or PON that performs transmission and reception through one fiber.

The MT9080 Series ACCESS Master executes a communication light check before emitting a pulse, and displays the check result on the screen. This function is provided to ensure normal measurement and protect communication system.

● Waveform comparison function

Measurement data is compared with the saved data by reading it. If measurement data is compared with the data provided when the optical fiber was installed, this function can be used to check aging and identify the failure location in the event of a failure.

● Warning level setting function

Events of loss and reflection at or above the set level are highlighted in the event table. At a glance, whether the line is acceptable can be identified when connection loss at each point is evaluated in installation or maintenance of the optical fiber.

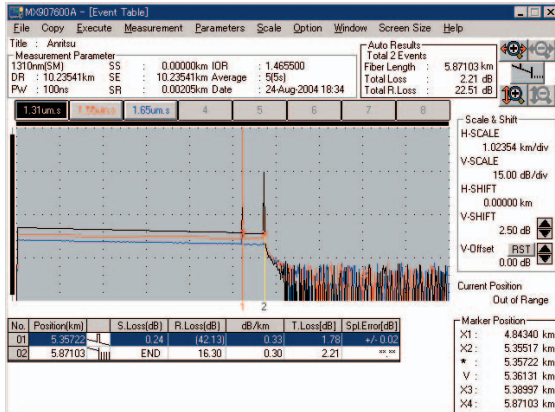


Emulation software MX907600A

This PC software is used to analyze and edit the recorded data on a Windows-based PC in the office. A report can also be created.

● Emulation function

Measured waveform data can be analyzed using a PC.



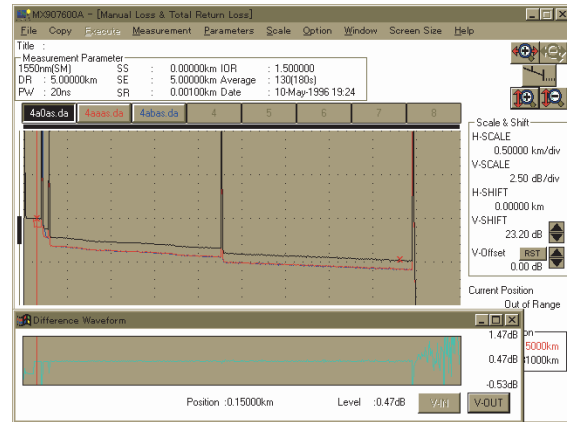
● Both-end measurement function

A new waveform can be composed by averaging data measured at both ends of an optical fiber.



● Waveform difference display function

When two wavelengths are chosen from waveforms read in the emulation mode, the difference between these two waveforms is displayed in another window, permitting easy comparison of aging changes in optical fibers.



● Report output

The event table of a specified file is analyzed and the printed automatically. It is also possible to print multiple waveforms on one page. In particular, at both ends measurement, the measurement results for both ends can be output automatically in a report. In addition, the report can be saved as the Excel file.

Microsoft Excel - E7_report.xls

File Edit Format View Tools Data Window Help

Both Ends Measurement Splice Loss Summary Rep

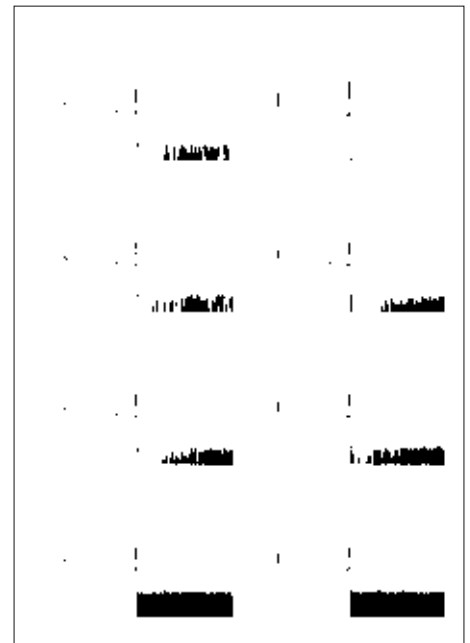
Wavelength: 1310 nm 271

Cable: Mt.Fuji - Kyoto City

Splice No./ Mt.Fuji - Kyoto City/ Kyoto City - Mt.Fuji

Fiber No.	01	02	03	ATG	Min	Max	Average (dB)
000	0.76	0.13	0.02	0.30	0.02	0.76	5.36
002	0.77	0.13	0.03	0.31	0.03	0.77	5.36
003	0.76	0.13	0.03	0.31	0.03	0.76	5.36
004	0.76	0.13	0.03	0.30	0.02	0.76	5.42
005	0.76	0.13	0.02	0.30	0.02	0.76	5.48
006	0.76	0.13	0.02	0.30	0.02	0.76	5.48
007	0.76	0.13	0.01	0.30	0.01	0.76	5.45
008	0.76	0.13	0.01	0.30	0.01	0.76	5.45

Printer: Page 2 of 2



MT9080 Series ACCESS Master

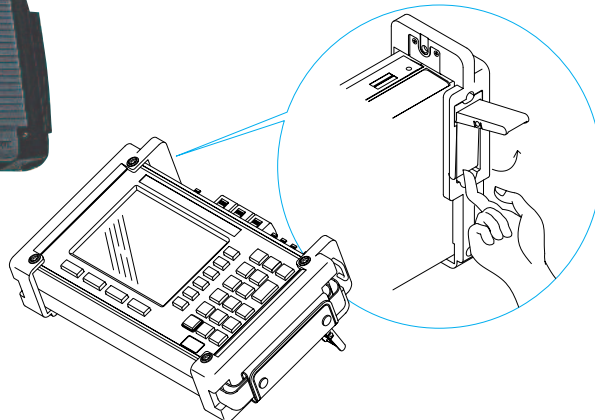
- ① Function key
- ② Panel key
- ③ Battery pack
- ④ Visible light source connector (Option)
Visible light source function by the red laser diode.
- ⑤ OTDR, light source, optical power measurement connector (1.65 μm)
OTDR, light source and optical power measurement can be done by the same connector port.
- ⑥ OTDR, light source, optical power measurement connector (1.31/1.55 μm)
OTDR, light source and optical power measurement can be done by the same connector port.
- ⑦ USB port
Memory type and USB mass storage class.
The internal memory of the MT9080 Series ACCESS Master can be read/written as a PC disk drive by connecting with the PC via a USB cable.
- ⑧ AC adapter connection connector



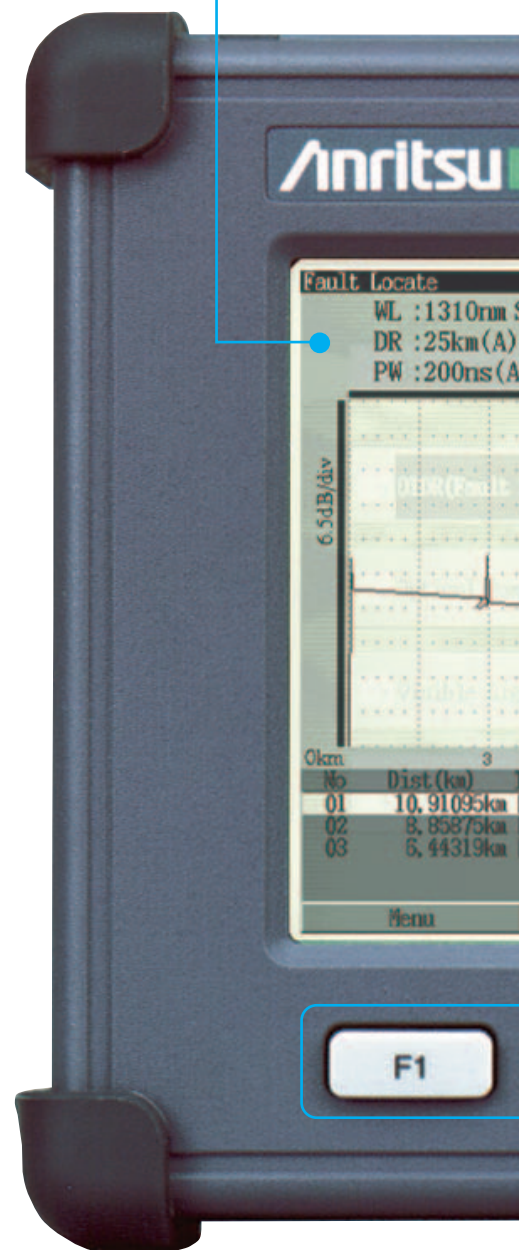
When a protector is attached, it is convenient for operation and carrying.
(It is an option product. Shoulder strap and protective cover are also included.)



Protective cover



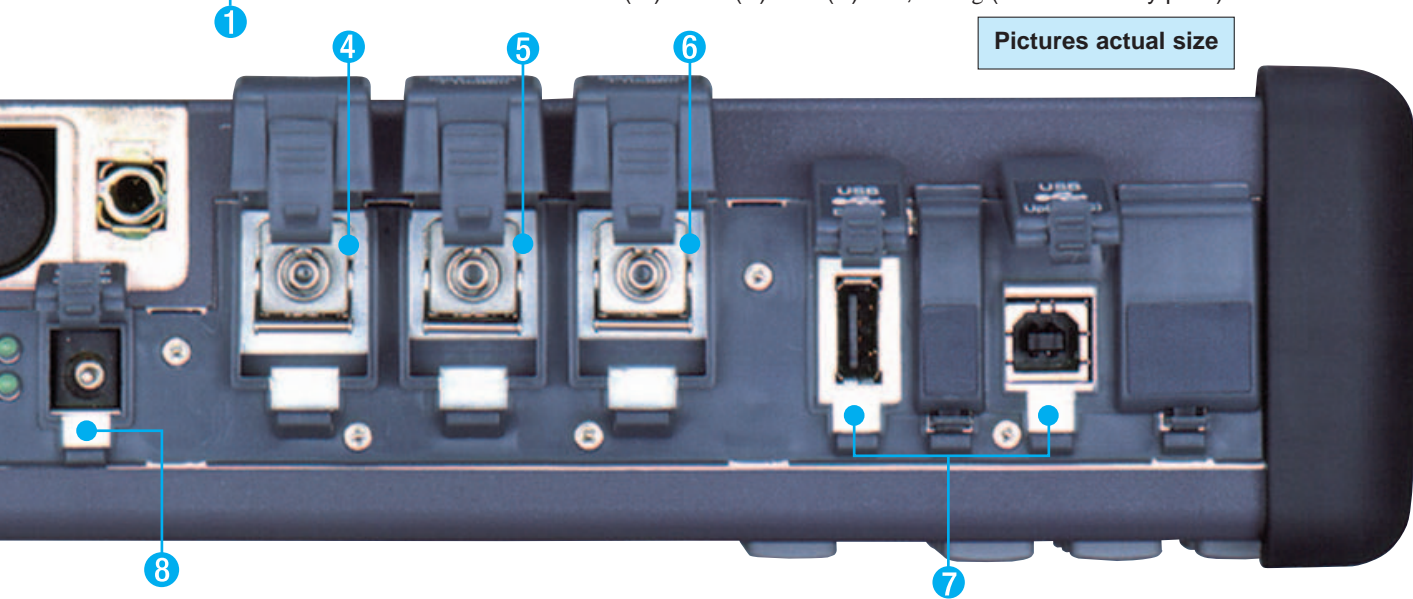
6.2 inch monochrome LCD
(with backlight, semi-transparent)





254 (W) x 162 (H) x 61 (D) mm, 2.2 kg (Include Battery pack)

Pictures actual size



ACCESS Master (main frame)

Model	MT9080A	MT9080B	MT9080C	MT9080D	MT9080E	MT9080F
Wavelength	1310 ±30 nm*1	1550 ±30 nm*1	1645 to 1655 nm*1,*2	1310/1550 ±30 nm*1	1550 ±30 nm/ 1645 to 1655 nm*1,*2	1310/1550 ±30 nm/ 1645 to 1655 nm*1,*2
Measurable optical fiber	10/125 μm single-mode optical fiber (ITU-T G.652)					
Optical connector	FC, SC, DIN, HMS-10/A, ST, LC (replaceable, PC type)					
Distance range	0.5, 1, 2.5, 5, 10, 25, 50 km					
Pulse width	3 ns, 20 ns, 50 ns, 100 ns, 200 ns, 500 ns, 1 μs, 2 μs					
Dynamic range*3,*4,*5 (S/N = 1)	26.5 dB (1.31 μm)	25 dB (1.55 μm)	22 dB (1.65 μm)	26 dB (1.31 μm) 24.5 dB (1.55 μm)	24.5 dB (1.55 μm) 22 dB (1.65 μm)	25.5 dB (1.31 μm) 24 dB (1.55 μm) 22 dB (1.65 μm)
Dead zone*6 (back-scattered light) (IOR = 1.500000)	≤7.5 m (1.31 μm)	≤8.5 m (1.55 μm)	≤11 m (1.65 μm)	≤7.5 m (1.31 μm) ≤8.5 m (1.55 μm)	≤8.5 m (1.55 μm) ≤11 m (1.65 μm)	≤7.5 m (1.31 μm) ≤8.5 m (1.55 μm) ≤11 m (1.65 μm)
Dead zone*7 (Fresnel reflection) (IOR = 1.500000)	≤1 m ≤0.8 m (Typ.)					
Marker resolution (IOR = 1.500000)	0.05 to 100 m					
Sampling resolution (IOR = 1.500000)	0.05 to 10 m					
Sampling points	Normal: 5001 High density: 20001 or 25001*8					
Y-axis scale	0.05, 0.125, 0.25, 0.5, 1.25, 2.5, 5, 6.5 dB/div					
IOR settings	1.000000 to 1.999999 (0.000001 steps)					
Distance measurement accuracy	±1 m ±3 × measurement distance × 10 ⁻⁵ ±marker resolution (excluding uncertainty caused by fiber IOR)					
Loss measurement accuracy (linearity)	±0.05 dB/dB or ±0.1 dB (whichever is greater)					
Return loss measurement accuracy	±2 dB					
Automatic measurement*9	<p>Fault locate: Events judged as a failure are displayed sequentially from the first possible event. The distance of the possible event point, Total loss or Splice loss, and event type are displayed at the upper right of the wavelength display screen.</p> <p>Measurement items: Total loss, Total return loss or Average loss Each event distance, Connection loss, Return loss or Reflection amount, Total return loss or Average loss (displays in table format)</p> <p>Threshold values Connection loss: 0.01 to 9.99 dB (0.01 dB steps), Return loss: 20.0 to 60.0 dB (0.1 dB steps), Fiber-end: 1 to 99 dB (1 dB steps)</p> <p>Number of detected events: Up to 99</p> <p>Automatic setting: Distance range, Pulse width, Averaging count (time)</p> <p>Connection check: Automatic check of front panel connector connection quality</p> <p>Communication light check: Check for presence of communication light in optical fiber to be measured (≥-40 dBm)</p>					
Manual measurement	<p>Measurement items: Transmission loss and distance between 2 points, Loss per unit length between 2 points, Connection loss, Return loss or difference of levels</p> <p>Real-time sweep: 0.2 second or less (sampling mode: Normal)</p>					
Light source for identification tester	<p>Applicable fiber: SM fiber (ITU-T G.652), PC type</p> <p>Optical connector: Shared with OTDR (same port)</p> <p>Light emission element: FP-LD</p> <p>Central wavelength*10: 1310 ±30 nm (MT9080A/D/F) 1550 ±30 nm (MT9080B/D/E/F) 1650 ±5 nm (MT9080C/E/F)</p> <p>Optical output power*11: -8 dBm or more</p> <p>Optical output waveform: 270 Hz/1 KHz/2 KHz (Modulation light is square wave)</p> <p>Modulated frequency: 270 Hz/1 KHz/2 KHz ±1.5%</p> <p>Warm-up time: 10 minutes (after turning optical output On)</p> <p>Laser safety specification: 21CFR Class 1, IEC 60825-1 Class 1</p>					
Optical power meter	<p>Applicable fiber: SM fiber (ITU-T G.652)</p> <p>Wavelength setting: MT9080A/B/D (1310/1550 nm port): 1310/1550/1625/1650 nm MT9080C/E/F (1310/1550 nm port): 1310/1550/1625 nm MT9080C/E/F (1650 nm port): 1650 nm</p> <p>Optical connector: Shared with OTDR</p> <p>Optical power: -50 to -5 dBm (peak power)</p> <p>Absolute maximum rated input: +10 dBm</p> <p>Measurement accuracy: ±6.5% (-20 dBm, CW light, 23°C ±2°C, after executing zero offset, Wavelength 1550 nm)</p>					

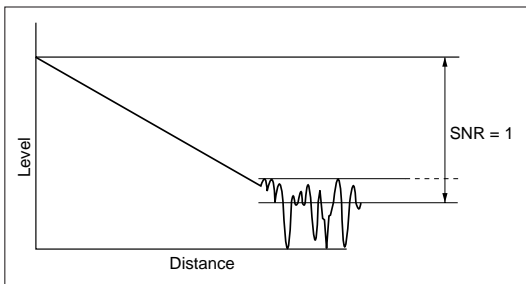
Model	MT9080A	MT9080B	MT9080C	MT9080D	MT9080E	MT9080F
Other functions	Waveform storage: SR-4731 Horizontal offset setting (zero cursor setting) Internal memory Language display: English/Japanese switchable by system configuration Power-saving setting function Backlight off: Disable/1 to 99 min., Shutdown: Disable/1 to 99 min. Waveform comparing function Calendar clock Distance unit set: km, kf, mi, f, m Title input: Up to 32 characters Remaining battery power display, Auto dummy fiber setting function, Continuous light emitting function, Buzzer setting					
Display	6.2 inch monochrome LCD (Option 04, 640 × 480 dots, with backlight, semi-transparent)					
Interface	USB 1.1 Type A × 1 (memory), Type B × 1 (USB mass storage class): The internal memory of the MT9080 Series product can be read/written as a PC disk drive by connecting with the PC via a USB cable.)					
Laser safety specification	21CFR Class 1, IEC 60825-1 Class 1					
Power supply	12 Vdc, Allowable input voltage range: 10.8 to 15 Vdc 100 to 240 Vac, Allowable input voltage range: 90 to 264 V, 50/60 Hz (Specific AC adapter is used.) Battery pack: DR15SBA can be used.					
Power	≤20 W (when charged), Standard 5 W (With backlight Off, sweeping halted)					
Battery operating time*12	Continuous operation time: 4 h (typical value)					
Battery charging time*13	≤3 h					
Dimensions and mass	254 (W) × 162 (H) × 61 (D) mm (main body only), ≤2 kg (only main frame), ≤2.2 kg (DR15SBA battery pack included) 277 (W) × 199 (H) × 80 (D) mm [main body + protector + protective cover (without hand strap and shoulder strap)], ≤2.9 kg [main body + battery pack + VLD + protector (without protective cover)]					
Environmental condition	Operating temperature and humidity: 0° to +40°C, ≤85% (no condensation), During battery charge: 0° to +30°C (power OFF), Storage temperature and humidity: -20° to +60°C, ≤85% Vibration: Conforming to MIL-T-28800E Class 3, Pulse shock: MIL-T-28800E, Move shock: MIL-T-28800E Style C (20.3 cm corner, surface total 14 times shocks, Power OFF), Vamp: IEC 63-2-29, JIS C 0042					
EMC	EN61326: 1997/A2: 2001 (Class A), EN61000-3-2: 2000 (Class A), EN61326: 1997/A2: 2001 (Annex A)					
LVD	EN61010-1: 2001 (Pollution Degree 2)					

*1 At 25°C, pulse width: 1 μs

*2 Wavelength range for 20 dB lower than the peak value. Peak value +15 dB or less.

*3 At 25°C, pulse width: 2 μs, Distance range: 50 km, Average: 180 sec.

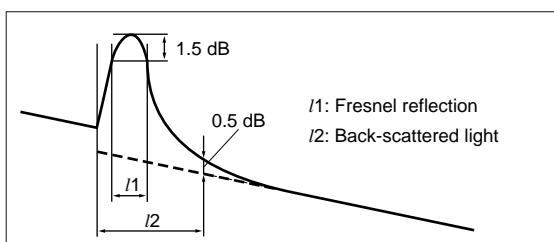
*4 Dynamic range (one-way back-scattered light), SNR = 1: The level difference between the RMS noise level and the level where near end back-scattering occurs.



*5 At 1.65 μm: With backlight, 1.55 μm -19 dBm CW light

*6 At 25°C, pulse width: 20 ns, Return loss: 40 dB, Deviation: ±0.5 dB (Refer to the figure below.)

*7 At 25°C, pulse width: 3 ns (Refer to the figure below.)



*8 Either value is automatically selected in each mode, depending on the distance range.

*9 The automatic measurement is an auxiliary function to facilitate measurement operations, and does not assure any detected results. As there may be a case of miss detection, be sure to check waveform data as well for final judgement of measured results.

*10 25°C, 270 Hz

*11 25°C, SM fiber 2 m, Modulation light: 270 Hz, Averaged power with 50% duty. Operating temperature range for 1.65 μm: 0° to +35°C

*12 Backlight Off, Sweeping halted, at 25°C

*13 With power Off, Temperature range: 0° to +30°C

● Battery pack: DR15SBA

Battery	Ni-MH secondary battery
Voltage, capacity	10.8 Vdc, 2100 mAh
Dimensions and mass	145 (W) × 52.8 (H) × 19.3 (D) mm, 305 g typ.
Operating temperature	Charging: 0° to +45°C Discharging: -20° to +50°C Storage: -20° to +35°C

● AC adapter: SA165A-1250V-3

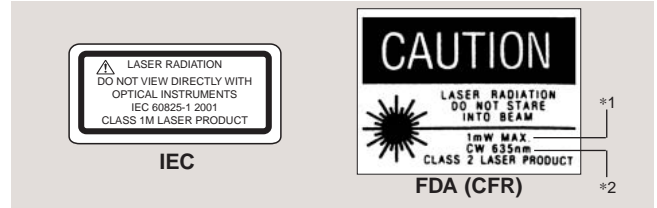
Rated AC input	100 to 240 Vac, 50/60 Hz
Rated DC output	12 Vdc, 3 A
Dimensions and mass	122 (W) × 60 (H) × 34 (D) mm, 305 ±5 g
Environmental conditions	Operating temperature: 0° to +40°C, 20 to 80% R.H. Storage temperature: -20° to +80°C 10 to 95% R.H.

● **Visible LD** (Option 02)

Central wavelength	635 nm ±15 nm (at 25°C)
Optical output	-3 ±1.5 dBm
Output optical fiber	10/125 μm, SM (ITU-T G.652)
Optical connector	FC, SC, ST, DIN, HMS-10/A, LC
Optical safety	IEC60825-1 Class 1M, 21CFR Class 2
Environmental conditions	Operating temperature and humidity: 0° to +35°C, ≤85% (no condensation)

Safety measures for laser products

This option complies with optical safety standards in Class 1M of the IEC 60825-1 and the FDA (21CFR1040.10, USA) in Class 2; the following descriptive labels are affixed to the product (FDA label is only affixed to product for export to the USA).



The maximum output is indicated under *1, and the wavelength under *2. Caution: Do not look directly into the laser beam.

Ordering Information

Please specify model/order number, name and quantity when ordering.

Model/Order No.	Name
— ACCESS Master (main frame) —	
MT9080A	SMF 1.31 μm
MT9080B	SMF 1.55 μm
MT9080C	SMF 1.65 μm
MT9080D	SMF 1.31/1.55 μm
MT9080E	SMF 1.55/1.65 μm
MT9080F	SMF 1.31/1.55/1.65 μm
— Standard accessories —	
W2487AE	MT9080 Series operation manual (CD): 1 copy
SA165A-1250V-3	AC adapter: 1 pc
DR15SBA	Battery pack: 1 pc
— Software —	
MX907600A	OTDR Emulation Software
— Options*1 —	
MT9080I J-02	Visible LD (Factory option)
MT9080I J-04	Monochrome LCD
MT9080I J-09	English language display
MT9080I J-10	Protector

Model/Order No.	Name
MT9080I J-33*2	LC connector
MT9080I J-37*2	FC connector
MT9080I J-38*2	ST connector
MT9080I J-39*2	DIN connector
MT9080I J-40*2	SC connector
MT9080I J-43*2	HMS-10/A connector
— Application parts —	
Z0740	Battery charger (For DR15SBA)
J1270	Replaceable optical LC connector
J0617B	Replaceable optical FC connector
J0618D	Replaceable optical ST connector
J0618E	Replaceable optical DIN connector
J0618F	Replaceable optical HMS-10/A connector
J0619B	Replaceable optical SC connector
J0057	Optical adapter FC type
J0635I J*3	Optical fiber cord with FC-PC at both ends (SM, with FC-PC at both ends)
Z0282	Ferrule cleaner
Z0283	Ferrule cleaning tape (6 pcs/set)
Z0284	Adapter cleaner (Stick type, 200 pcs/set)

*1 Installed in MT9080A/B/C/D/E/F

*2 Specify the optical connector

*3 Specify the optical fiber length as A, B or C (A: 1 m, B: 2 m, C: 3 m)

Anritsu

Specifications are subject to change without notice.

ANRITSU CORPORATION

1800 Onna, Atsugi-shi, Kanagawa, 243-8555 Japan
Phone: +81-46-223-1111
Fax: +81-46-296-1264

● **U.S.A.**

ANRITSU COMPANY

TX OFFICE SALES AND SERVICE

1155 East Collins Blvd., Richardson, TX 75081, U.S.A.
Toll Free: 1-800-ANRITSU (267-4878)
Phone: +1-972-644-1777
Fax: +1-972-644-3416

● **Canada**

ANRITSU ELECTRONICS LTD.

700 Silver Seven Road, Suite 120, Kanata, ON K2V 1C3, Canada
Phone: +1-613-591-2003
Fax: +1-613-591-1006

● **Brasil**

ANRITSU ELETRÔNICA LTDA.

Praca Amadeu Amaral, 27 - 1 andar
01327-010 - Paraisópolis, São Paulo, Brazil
Phone: +55-11-3283-2511
Fax: +55-11-3886940

● **U.K.**

ANRITSU LTD.

200 Capability Green, Luton, Bedfordshire LU1 3LU, U.K.
Phone: +44-1582-433280
Fax: +44-1582-731303

● **Germany**

ANRITSU GmbH

Grafenberger Allee 54-56, 40237 Düsseldorf, Germany
Phone: +49-211-96855-0
Fax: +49-211-96855-55

● **France**

ANRITSU S.A.

9, Avenue du Québec Z.A. de Courtbaœuf 91951 Les Ulis Cedex, France
Phone: +33-1-60-92-15-50
Fax: +33-1-64-46-10-65

● **Italy**

ANRITSU S.p.A.

Via Elio Vittorini, 129, 00144 Roma EUR, Italy
Phone: +39-06-509-9711
Fax: +39-06-502-2425

● **Sweden**

ANRITSU AB

Borgarfjordsgatan 13 164 40 Kista, Sweden
Phone: +46-853470700
Fax: +46-853470730

● **Singapore**

ANRITSU PTE LTD.

10, Hoe Chiang Road #07-01/02, Keppel Towers, Singapore 089315
Phone: +65-6282-2400
Fax: +65-6282-2533

● **Hong Kong**

ANRITSU COMPANY LTD.

Suite 923, 9/F., Chinachem Golden Plaza, 77 Mody Road, Tsimshatsui East, Kowloon, Hong Kong, China
Phone: +852-2301-4980
Fax: +852-2301-3545

● **P. R. China**

ANRITSU COMPANY LTD.

Beijing Representative Office

Room 1515, Beijing Fortune Building, No. 5 North Road, the East 3rd Ring Road, Chao-Yang District Beijing 100004, P.R. China
Phone: +86-10-6590-9230

● **Korea**

ANRITSU CORPORATION

8F Hyun Juk Bldg. 832-41, Yeoksam-dong, Kangnam-ku, Seoul, 135-080, Korea
Phone: +82-2-553-6603
Fax: +82-2-553-6604

● **Australia**

ANRITSU PTY LTD.

Unit 3/170 Forster Road Mt. Waverley, Victoria, 3149, Australia
Phone: +61-3-9558-8177
Fax: +61-3-9558-8255

● **Taiwan**

ANRITSU COMPANY INC.

7F, No. 316, Sec. 1, NeiHu Rd., Taipei, Taiwan
Phone: +886-2-8751-1816
Fax: +886-2-8751-1817

040602